

Product datasheet for **TA338922**

CFAP410 Rabbit Polyclonal Antibody

Product data:

Product Type:	Primary Antibodies
Applications:	WB
Recommended Dilution:	WB
Reactivity:	Human
Host:	Rabbit
Isotype:	IgG
Clonality:	Polyclonal
Immunogen:	The immunogen for anti-C21orf2 antibody: synthetic peptide directed towards the N terminal of human C21orf2. Synthetic peptide located within the following region: KLTRKMVLTRAKASELH SVRKLNCWGSRLT DISICQEMPSLEVITLSVNS
Formulation:	Liquid. Purified antibody supplied in 1x PBS buffer with 0.09% (w/v) sodium azide and 2% sucrose.
Concentration:	lot specific
Purification:	Protein A purified
Conjugation:	Unconjugated
Storage:	Store at -20°C as received.
Stability:	Stable for 12 months from date of receipt.
Predicted Protein Size:	28 kDa
Gene Name:	chromosome 21 open reading frame 2
Database Link:	NP_004919 Entrez Gene 755 Human O43822
Background:	Four alternatively spliced transcript variants encoding four different isoforms have been found for this nuclear gene. All isoforms contain leucine-rich repeats. Three of these isoforms are mitochondrial proteins and one of them lacks the target peptide, so is not located in mitochondrion. This gene is down-regulated in Down syndrome (DS) brain, which may represent mitochondrial dysfunction in DS patients. [provided by RefSeq, Sep 2012]
Synonyms:	A2; LRRC76; YF5



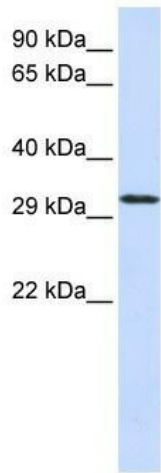
[View online »](#)

Note: Immunogen Sequence Homology: Dog: 100%; Pig: 100%; Rat: 100%; Horse: 100%; Human: 100%; Bovine: 100%; Guinea pig: 100%; Mouse: 93%

Product images:



WB Suggested Anti-C21orf2 Antibody Titration:
5% Milk; ELISA Titer: dilution: 1: 500; Positive Control: human LCL



WB Suggested Anti-C21orf2 Antibody Titration:
0.2-1 ug/ml; ELISA Titer: 1: 1562500; Positive Control: 293T cell lysate. There is BioGPS gene expression data showing that C21orf2 is expressed in HEK293T