

## Product datasheet for **TA338920**

### PSMG1 Rabbit Polyclonal Antibody

#### Product data:

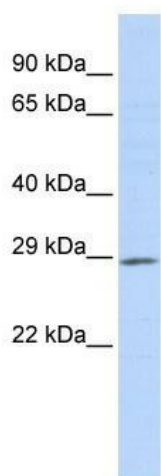
|                         |   |
|-------------------------|---|
| Product Type:           | Primary Antibodies  |
| Applications:           | WB  |
| Recommended Dilution:   | WB  |
| Reactivity:             | Human   |
| Host:                   | Rabbit  |
| Isotype:                | IgG   |
| Clonality:              | Polyclonal  |
| Immunogen:              | The immunogen for anti-PSMG1 antibody: synthetic peptide directed towards the middle region of human PSMG1. Synthetic peptide located within the following region:<br>TILTCRHVTDYKTSESTGSLPSPFLRALKTQNFKDSACCPLLEQPNIVHD  |
| Formulation:            | Liquid. Purified antibody supplied in 1x PBS buffer with 0.09% (w/v) sodium azide and 2% sucrose.<br><i>Note that this product is shipped as lyophilized powder to China customers.</i>   |
| Concentration:          | lot specific  |
| Purification:           | Protein A purified  |
| Conjugation:            | Unconjugated  |
| Storage:                | Store at -20°C as received.   |
| Stability:              | Stable for 12 months from date of receipt.  |
| Predicted Protein Size: | 30 kDa  |
| Gene Name:              | proteasome assembly chaperone 1   |
| Database Link:          | <a href="#">NP_982257</a><br><a href="#">Entrez Gene 8624 Human</a><br><a href="#">O95456</a>   |
| Background:             | PSMG1 is a chaperone protein which promotes assembly of the 20S proteasome as part of a heterodimer with PSMG2. The PSMG1-PSMG2 heterodimer binds to the PSMA5 and PSMA7 proteasome subunits, promotes assembly of the proteasome alpha subunits into the heteroheptameric alpha ring and prevents alpha ring dimerization. |
| Synonyms:               | C21LRP; DSCR2; LRPC21; PAC-1; PAC1  |



[View online »](#)

**Note:** Immunogen Sequence Homology: Human: 100%; Rat: 92%; Mouse: 92%; Dog: 85%; Pig: 85%; Horse: 85%; Bovine: 85%; Guinea pig: 85%; Rabbit: 77%

### Product images:



WB Suggested Anti-PSMG1 Antibody Titration: 0.2-1 ug/ml; ELISA Titer: 1: 1562500; Positive Control: MCF7 cell lysate. PSMG1 is supported by BioGPS gene expression data to be expressed in MCF7