

Product datasheet for **TA338919**

PSMG1 Rabbit Polyclonal Antibody

Product data:

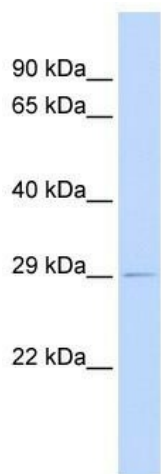
Product Type:	Primary Antibodies
Applications:	WB
Recommended Dilution:	WB
Reactivity:	Human
Host:	Rabbit
Isotype:	IgG
Clonality:	Polyclonal
Immunogen:	The immunogen for anti-PSMG1 antibody: synthetic peptide directed towards the middle region of human PSMG1. Synthetic peptide located within the following region: VMKLDLITVEAFKPISTRSLKGLVKIPQSTEILKKLMTTNEIQSNIYT
Formulation:	Liquid. Purified antibody supplied in 1x PBS buffer with 0.09% (w/v) sodium azide and 2% sucrose. <i>Note that this product is shipped as lyophilized powder to China customers.</i>
Concentration:	lot specific
Purification:	Protein A purified
Conjugation:	Unconjugated
Storage:	Store at -20°C as received.
Stability:	Stable for 12 months from date of receipt.
Predicted Protein Size:	33 kDa
Gene Name:	proteasome assembly chaperone 1
Database Link:	NP_003711 Entrez Gene 8624 Human O95456
Background:	PSMG1 is a chaperone protein which promotes assembly of the 20S proteasome as part of a heterodimer with PSMG2. The PSMG1-PSMG2 heterodimer binds to the PSMA5 and PSMA7 proteasome subunits, promotes assembly of the proteasome alpha subunits into the heteroheptameric alpha ring and prevents alpha ring dimerization.
Synonyms:	C21LRP; DSCR2; LRPC21; PAC-1; PAC1



[View online »](#)

Note: Immunogen Sequence Homology: Dog: 100%; Pig: 100%; Human: 100%; Bovine: 100%; Rabbit: 100%; Rat: 93%; Horse: 93%; Mouse: 93%; Guinea pig: 92%

Product images:



WB Suggested Anti-PSMG1 Antibody Titration:
0.2-1 ug/ml; ELISA Titer: 1: 62500; Positive
Control: Human heart