

Product datasheet for TA338918

RRP1 like protein (RRP1) Rabbit Polyclonal Antibody

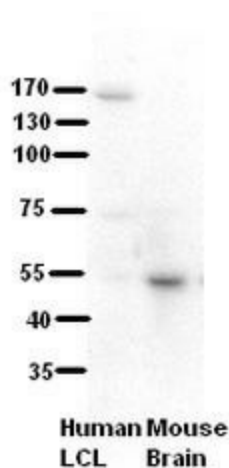
Product data:

Product Type:	Primary Antibodies
Applications:	IHC, WB
Recommended Dilution:	WB, IHC
Reactivity:	Human, Mouse
Host:	Rabbit
Isotype:	IgG
Clonality:	Polyclonal
Immunogen:	The immunogen for anti-RRP1 antibody: synthetic peptide directed towards the C terminal of human RRP1. Synthetic peptide located within the following region: IPEKACRRLLGRRQKTKKQKRLRLQQERGKGEKEPPSPGMERKRSRR
Formulation:	Liquid. Purified antibody supplied in 1x PBS buffer with 0.09% (w/v) sodium azide and 2% sucrose.
Concentration:	lot specific
Purification:	Protein A purified
Conjugation:	Unconjugated
Storage:	Store at -20°C as received.
Stability:	Stable for 12 months from date of receipt.
Predicted Protein Size:	53 kDa
Gene Name:	ribosomal RNA processing 1
Database Link:	NP_003674 Entrez Gene 8568 Human P56182
Background:	The protein encoded by this gene is the putative homolog of the yeast ribosomal RNA processing protein RRP1. The encoded protein is involved in the late stages of nucleogenesis at the end of mitosis, and may be required for the generation of 28S rRNA. [provided by RefSeq, Jul 2008]
Synonyms:	D21S2056E; NNP-1; NOP52; RRP1A

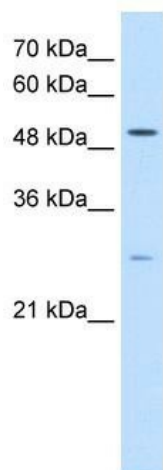

[View online »](#)

Note: Immunogen Sequence Homology: Human: 100%

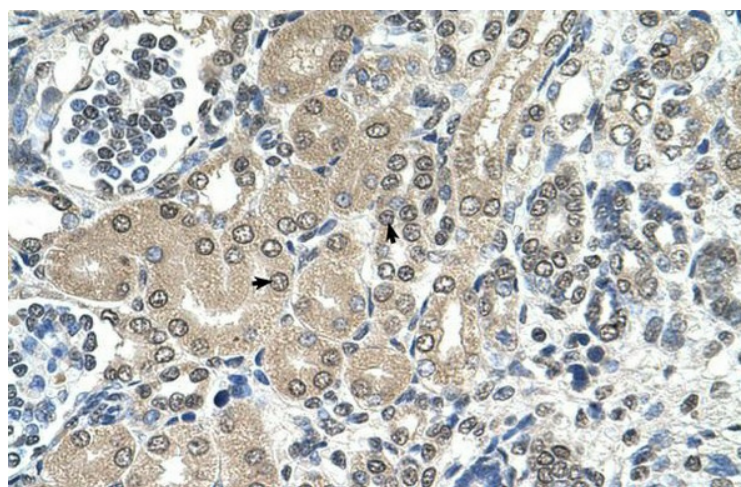
Product images:



WB Suggested Anti-RRP1 Antibody Titration: 5% Milk; ELISA Titer: dilution: 1: 500; Positive Control: human LCL and mouse brains



WB Suggested Anti-RRP1 Antibody Titration: 0.2-1 ug/ml; Positive Control: HepG2 cell lysate. RRP1 is supported by BioGPS gene expression data to be expressed in HepG2



Human kidney