

Product datasheet for **TA338917**

TFF1 Rabbit Polyclonal Antibody

Product data:

Product Type:	Primary Antibodies
Applications:	WB
Recommended Dilution:	WB
Reactivity:	Human
Host:	Rabbit
Isotype:	IgG
Clonality:	Polyclonal
Immunogen:	The immunogen for anti-TFF1 antibody: synthetic peptide directed towards the middle region of human TFF1. Synthetic peptide located within the following region: PRERQNCGFPGVTPSQCANKGCCFDDTVRGVPWCFYPNTIDVPEEECEF
Formulation:	Liquid. Purified antibody supplied in 1x PBS buffer with 0.09% (w/v) sodium azide and 2% sucrose. <i>Note that this product is shipped as lyophilized powder to China customers.</i>
Concentration:	lot specific
Purification:	Protein A purified
Conjugation:	Unconjugated
Storage:	Store at -20°C as received.
Stability:	Stable for 12 months from date of receipt.
Predicted Protein Size:	7 kDa
Gene Name:	trefoil factor 1
Database Link:	NP_003216 Entrez Gene 7031 Human P04155



[View online »](#)

Background:

Members of the trefoil family are characterized by having at least one copy of the trefoil motif, a 40-amino acid domain that contains three conserved disulfides. They are stable secretory proteins expressed in gastrointestinal mucosa. Their functions are not defined, but they may protect the mucosa from insults, stabilize the mucus layer, and affect healing of the epithelium. This gene, which is expressed in the gastric mucosa, has also been studied because of its expression in human tumors. This gene and two other related trefoil family member genes are found in a cluster on chromosome 21. [provided by RefSeq, Jul 2008]

Synonyms:

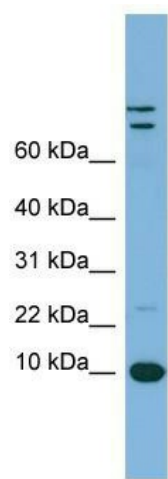
BCEI; D21S21; HP1.A; HPS2; pNR-2; pS2

Note:

Immunogen Sequence Homology: Human: 100%

Protein Families:

Druggable Genome, Secreted Protein

Product images:

WB Suggested Anti-TFF1 Antibody Titration: 0.2-1 ug/ml; ELISA Titer: 1: 312500; Positive Control: Human Stomach