

Product datasheet for **TA338916**

Collagen VI (COL6A2) Rabbit Polyclonal Antibody

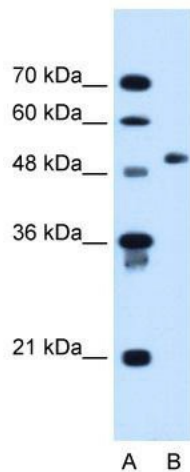
Product data:

Product Type:	Primary Antibodies
Applications:	WB
Recommended Dilution:	WB
Reactivity:	Human
Host:	Rabbit
Isotype:	IgG
Clonality:	Polyclonal
Immunogen:	The immunogen for anti-COL6A2 antibody: synthetic peptide directed towards the C terminal of human COL6A2. Synthetic peptide located within the following region: ARRFVEQVARRRLTARRDDDPLNARVALLQFGGPGEQQVAFPLSHNLTAI
Formulation:	Liquid. Purified antibody supplied in 1x PBS buffer with 0.09% (w/v) sodium azide and 2% sucrose. <i>Note that this product is shipped as lyophilized powder to China customers.</i>
Concentration:	lot specific
Purification:	Protein A purified
Conjugation:	Unconjugated
Storage:	Store at -20°C as received.
Stability:	Stable for 12 months from date of receipt.
Predicted Protein Size:	109 kDa
Gene Name:	collagen type VI alpha 2
Database Link:	NP_001840 Entrez Gene 1292 Human P12110



[View online »](#)

Background:	This gene encodes one of the three alpha chains of type VI collagen, a beaded filament collagen found in most connective tissues. The product of this gene contains several domains similar to von Willebrand Factor type A domains. These domains have been shown to bind extracellular matrix proteins, an interaction that explains the importance of this collagen in organizing matrix components. Mutations in this gene are associated with Bethlem myopathy and Ullrich scleroatonic muscular dystrophy. Three transcript variants have been identified for this gene. [provided by RefSeq, Jul 2008]
Synonyms:	BTHLM1; PP3610; UCMD1
Note:	Immunogen Sequence Homology: Human: 100%; Pig: 93%; Bovine: 93%; Dog: 92%; Rat: 86%; Horse: 86%
Protein Families:	Secreted Protein
Protein Pathways:	ECM-receptor interaction, Focal adhesion

Product images:

WB Suggested Anti-COL6A2 Antibody Titration:
1.25 ug/ml; Positive Control: HepG2 cell lysate