

Product datasheet for **TA338915**

Collagen VI (COL6A1) Rabbit Polyclonal Antibody

Product data:

Product Type:	Primary Antibodies
Applications:	WB
Recommended Dilution:	WB
Reactivity:	Human
Host:	Rabbit
Isotype:	IgG
Clonality:	Polyclonal
Immunogen:	The immunogen for anti-COL6A1 antibody: synthetic peptide directed towards the middle region of human COL6A1. Synthetic peptide located within the following region: ADITILLDGSASVGSNFDTTKRFKRLAERFLTAGRTDPAHDVRAVVQ
Formulation:	Liquid. Purified antibody supplied in 1x PBS buffer with 0.09% (w/v) sodium azide and 2% sucrose. <i>Note that this product is shipped as lyophilized powder to China customers.</i>
Concentration:	lot specific
Purification:	Protein A purified
Conjugation:	Unconjugated
Storage:	Store at -20°C as received.
Stability:	Stable for 12 months from date of receipt.
Predicted Protein Size:	106 kDa
Gene Name:	collagen type VI alpha 1
Database Link:	NP_001839 Entrez Gene 1291 Human P12109



[View online »](#)

Background:

The collagens are a superfamily of proteins that play a role in maintaining the integrity of various tissues. Collagens are extracellular matrix proteins and have a triple-helical domain as their common structural element. Collagen VI is a major structural component of microfibrils. The basic structural unit of collagen VI is a heterotrimer of the alpha1(VI), alpha2(VI), and alpha3(VI) chains. The alpha2(VI) and alpha3(VI) chains are encoded by the COL6A2 and COL6A3 genes, respectively. The protein encoded by this gene is the alpha 1 subunit of type VI collagen (alpha1(VI) chain). Mutations in the genes that code for the collagen VI subunits result in the autosomal dominant disorder, Bethlem myopathy. [provided by RefSeq, Jul 2008]

Synonyms:

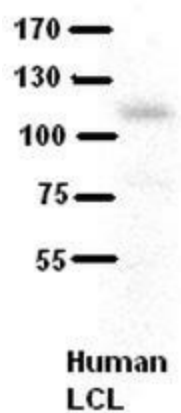
BTHLM1; OPLL; UCHMD1

Note:

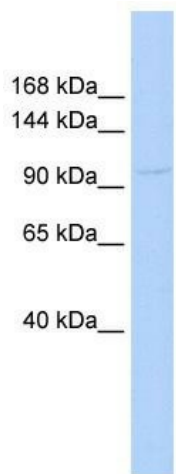
Immunogen Sequence Homology: Dog: 100%; Pig: 100%; Human: 100%; Rabbit: 100%; Rat: 93%; Horse: 93%; Bovine: 93%; Mouse: 86%

Protein Pathways:

ECM-receptor interaction, Focal adhesion

Product images:


WB Suggested Anti-COL6A1 Antibody Titration: 5% Milk; ELISA Titer: dilution: 1: 500; Positive Control: human LCL



WB Suggested Anti-COL6A1 Antibody Titration: 0.2-1 ug/ml; ELISA Titer: 1: 12500; Positive Control: 721_B cell lysate. There is BioGPS gene expression data showing that COL6A1 is expressed in 721_B