

## Product datasheet for **TA338914**

### CBR1 Rabbit Polyclonal Antibody

#### Product data:

Product Type:	Primary Antibodies
Applications:	WB
Recommended Dilution:	WB
Reactivity:	Human
Host:	Rabbit
Isotype:	IgG
Clonality:	Polyclonal
Immunogen:	The immunogen for anti-CBR1 antibody: synthetic peptide directed towards the C terminal of human CBR1. Synthetic peptide located within the following region: PGWVRTDMAGPKATKSPEEGAETPVYLALLPPDAEGPHGQFVSEKRVEQW
Formulation:	Liquid. Purified antibody supplied in 1x PBS buffer with 0.09% (w/v) sodium azide and 2% sucrose. <i>Note that this product is shipped as lyophilized powder to China customers.</i>
Concentration:	lot specific
Purification:	Protein A purified
Conjugation:	Unconjugated
Storage:	Store at -20°C as received.
Stability:	Stable for 12 months from date of receipt.
Predicted Protein Size:	30 kDa
Gene Name:	carbonyl reductase 1
Database Link:	<a href="#">NP_001748</a> <a href="#">Entrez Gene 873 Human</a> <a href="#">P16152</a>
Background:	The protein encoded by this gene belongs to the short-chain dehydrogenases/reductases (SDR) family, which function as NADPH-dependent oxidoreductases having wide specificity for carbonyl compounds, such as quinones, prostaglandins, and various xenobiotics. Alternatively spliced transcript variants have been found for this gene. [provided by RefSeq, Nov 2013]



[View online »](#)

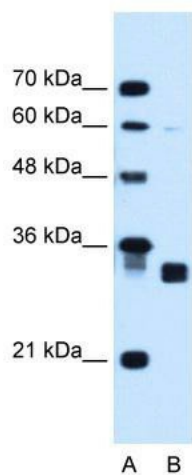
**Synonyms:** CBR; hCBR1; SDR21C1

**Note:** Immunogen Sequence Homology: Human: 100%; Mouse: 100%; Rabbit: 100%; Pig: 93%; Rat: 92%; Bovine: 92%; Dog: 85%; Horse: 85%; Guinea pig: 85%

**Protein Families:** Druggable Genome

**Protein Pathways:** Arachidonic acid metabolism, Metabolic pathways

### Product images:



WB Suggested Anti-CBR1 Antibody Titration: 1.25 ug/ml; Positive Control: HepG2 cell lysate