

Product datasheet for **TA338913**

CBR1 Rabbit Polyclonal Antibody

Product data:

Product Type:	Primary Antibodies
Applications:	WB
Recommended Dilution:	WB
Reactivity:	Human
Host:	Rabbit
Isotype:	IgG
Clonality:	Polyclonal
Immunogen:	The immunogen for anti-CBR1 antibody: synthetic peptide directed towards the middle region of human CBR1. Synthetic peptide located within the following region: AEVTMKTNFFGTRDVCTELLPLIKPQGRVNVSSIMSVRALKSCSPELQQ
Formulation:	Liquid. Purified antibody supplied in 1x PBS buffer with 0.09% (w/v) sodium azide and 2% sucrose. <i>Note that this product is shipped as lyophilized powder to China customers.</i>
Concentration:	lot specific
Purification:	Protein A purified
Conjugation:	Unconjugated
Storage:	Store at -20°C as received.
Stability:	Stable for 12 months from date of receipt.
Predicted Protein Size:	30 kDa
Gene Name:	carbonyl reductase 1
Database Link:	NP_001748 Entrez Gene 873 Human P16152
Background:	The protein encoded by this gene belongs to the short-chain dehydrogenases/reductases (SDR) family, which function as NADPH-dependent oxidoreductases having wide specificity for carbonyl compounds, such as quinones, prostaglandins, and various xenobiotics. Alternatively spliced transcript variants have been found for this gene. [provided by RefSeq, Nov 2013]



[View online »](#)

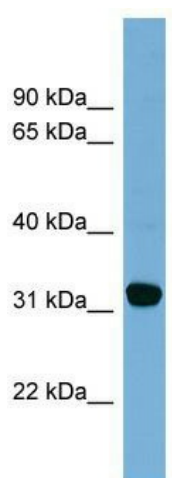
Synonyms: CBR; hCBR1; SDR21C1

Note: Immunogen Sequence Homology: Pig: 100%; Human: 100%; Mouse: 100%; Bovine: 100%; Dog: 93%; Rat: 93%; Horse: 93%; Guinea pig: 93%; Rabbit: 79%; Zebrafish: 79%

Protein Families: Druggable Genome

Protein Pathways: Arachidonic acid metabolism, Metabolic pathways

Product images:



WB Suggested Anti-CBR1 Antibody Titration: 0.2-1 ug/ml; Positive Control: OVCAR-3 cell lysate. CBR1 is supported by BioGPS gene expression data to be expressed in OVCAR3