

Product datasheet for **TA338910**

DYRK1A Rabbit Polyclonal Antibody

Product data:

Product Type:	Primary Antibodies
Applications:	WB
Recommended Dilution:	WB
Reactivity:	Mouse
Host:	Rabbit
Isotype:	IgG
Clonality:	Polyclonal
Immunogen:	The immunogen for anti-Dyrk1a antibody: synthetic peptide corresponding to a region of Mouse. Synthetic peptide located within the following region: SFHAAGLQMAAQMPHSHQYSRRQPNISDQQVSALSYSDDQIQPLTNQVM
Formulation:	Liquid. Purified antibody supplied in 1x PBS buffer with 0.09% (w/v) sodium azide and 2% sucrose. <i>Note that this product is shipped as lyophilized powder to China customers.</i>
Concentration:	lot specific
Purification:	Protein A purified
Conjugation:	Unconjugated
Storage:	Store at -20°C as received.
Stability:	Stable for 12 months from date of receipt.
Predicted Protein Size:	85 kDa
Gene Name:	dual specificity tyrosine phosphorylation regulated kinase 1A
Database Link:	NP_569120 Entrez Gene 13548 Mouse Q13627
Background:	Dyrk1a may play a role in a signaling pathway regulating nuclear functions of cell proliferation. Dyrk1a phosphorylates serine, threonine and tyrosine residues in its sequence and in exogenous substrates.
Synonyms:	DYRK; DYRK1; HP86; MNB; MNBH; MRD7

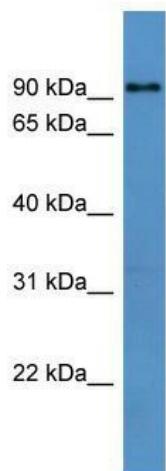


[View online »](#)

Note: Immunogen Sequence Homology: Pig: 100%; Rat: 100%; Horse: 100%; Human: 100%; Bovine: 100%; Rabbit: 100%; Guinea pig: 100%; Dog: 93%; Mouse: 93%

Protein Families: Druggable Genome, Protein Kinase

Product images:



WB Suggested Anti-Dyrk1a Antibody Titration:
0.2-1 ug/ml; ELISA Titer: 1: 62500; Positive
Control: Mouse Heart