

## Product datasheet for **TA338909**

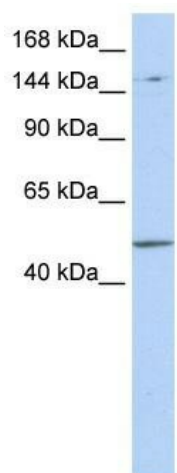
### PRDM15 Rabbit Polyclonal Antibody

#### Product data:

Product Type:	Primary Antibodies
Applications:	WB
Recommended Dilution:	WB
Reactivity:	Human
Host:	Rabbit
Isotype:	IgG
Clonality:	Polyclonal
Immunogen:	The immunogen for anti-PRDM15 antibody: synthetic peptide directed towards the middle region of human PRDM15. Synthetic peptide located within the following region: LCGTKVSTRASMSRHMRRKHPEVLAVRIDDLDHLPETTTIDASSIGIVQP
Formulation:	Liquid. Purified antibody supplied in 1x PBS buffer with 0.09% (w/v) sodium azide and 2% sucrose. <i>Note that this product is shipped as lyophilized powder to China customers.</i>
Concentration:	lot specific
Purification:	Protein A purified
Conjugation:	Unconjugated
Storage:	Store at -20°C as received.
Stability:	Stable for 12 months from date of receipt.
Predicted Protein Size:	134 kDa
Gene Name:	PR domain 15
Database Link:	<a href="#">NP_001035514</a> <a href="#">Entrez Gene 63977 Human P57071</a>
Background:	May be involved in transcriptional regulation.
Synonyms:	C21orf83; PFM15; ZNF298
Note:	Immunogen Sequence Homology: Dog: 100%; Pig: 100%; Rat: 100%; Human: 100%; Mouse: 100%; Bovine: 100%; Guinea pig: 100%



[View online »](#)

**Product images:**

WB Suggested Anti-PRDM15 Antibody Titration:  
0.2-1 ug/ml; ELISA Titer: 1: 312500; Positive  
Control: 293T cell lysate