

Product datasheet for **TA338902**

SH3BGR Rabbit Polyclonal Antibody

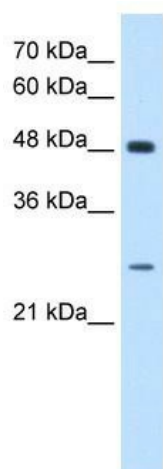
Product data:

Product Type:	Primary Antibodies
Applications:	WB
Recommended Dilution:	WB
Reactivity:	Human, Mouse
Host:	Rabbit
Isotype:	IgG
Clonality:	Polyclonal
Immunogen:	The immunogen for anti-SH3BGR antibody: synthetic peptide directed towards the N terminal of human SH3BGR. Synthetic peptide located within the following region: CGDFDSFFSAKEENIIYSFLGLAPPPDSKGSEKAEEGGETEAQKEGSEDV
Formulation:	Liquid. Purified antibody supplied in 1x PBS buffer with 0.09% (w/v) sodium azide and 2% sucrose.
Concentration:	lot specific
Purification:	Protein A purified
Conjugation:	Unconjugated
Storage:	Store at -20°C as received.
Stability:	Stable for 12 months from date of receipt.
Predicted Protein Size:	26 kDa
Gene Name:	SH3 domain binding glutamate rich protein
Database Link:	NP_031367 Entrez Gene 50795 Mouse Entrez Gene 6450 Human P55822
Background:	SH3BGR gene maps to the DS-CHD region and is a potential candidate for the pathogenesis of CHD.
Synonyms:	21-GARP
Note:	Immunogen Sequence Homology: Human: 100%; Horse: 83%

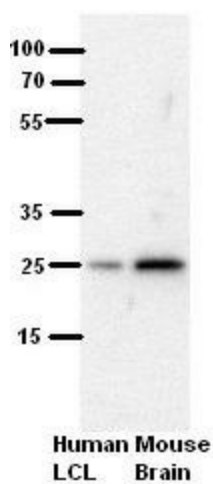


[View online »](#)

Product images:



WB Suggested Anti-SH3BGR Antibody Titration:
0.2-1 ug/ml; Positive Control: HepG2 cell lysate



WB Suggested Anti-SH3BGR Antibody Titration:
5% Milk; ELISA Titer: dilution: 1: 500; Positive
Control: human LCL and mouse brains