

Product datasheet for **TA338901**

Fbx15 (FBXO15) Rabbit Polyclonal Antibody

Product data:

Product Type:	Primary Antibodies
Applications:	WB
Recommended Dilution:	WB
Reactivity:	Human
Host:	Rabbit
Isotype:	IgG
Clonality:	Polyclonal
Immunogen:	The immunogen for anti-FBXO15 antibody: synthetic peptide directed towards the N terminal of human FBXO15. Synthetic peptide located within the following region: QDKEAGYWKEYITKQIASVKAALADILKPVNPYTGLPVKTKEALRIFGL
Formulation:	Liquid. Purified antibody supplied in 1x PBS buffer with 0.09% (w/v) sodium azide and 2% sucrose. <i>Note that this product is shipped as lyophilized powder to China customers.</i>
Concentration:	lot specific
Purification:	Protein A purified
Conjugation:	Unconjugated
Storage:	Store at -20°C as received.
Stability:	Stable for 12 months from date of receipt.
Predicted Protein Size:	49 kDa
Gene Name:	F-box protein 15
Database Link:	NP_689889 Entrez Gene 201456 Human Q8NCQ5



[View online »](#)

Background:

FBXO15 is the substrate-recognition component of the SCF (SKP1-CUL1-F-box protein)-type E3 ubiquitin ligase complex. Members of the F-box protein family, such as FBXO15, are characterized by an approximately 40-amino acid F-box motif. SCF complexes, formed by SKP1 (MIM 601434), cullin (see CUL1; MIM 603134), and F-box proteins, act as protein-ubiquitin ligases. F-box proteins interact with SKP1 through the F box, and they interact with ubiquitination targets through other protein interaction domains (Jin et al., 2004 [PubMed 15520277]). [supplied by OMIM]

Synonyms:

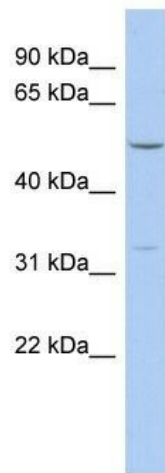
FBX15

Note:

Immunogen Sequence Homology: Dog: 100%; Pig: 100%; Rat: 100%; Horse: 100%; Human: 100%; Rabbit: 100%; Guinea pig: 86%; Bovine: 79%

Protein Families:

Druggable Genome

Product images:


WB Suggested Anti-FBXO15 Antibody Titration:
0.2-1 ug/ml; ELISA Titer: 1: 1562500; Positive
Control: OVCAR-3 cell lysate



FBXO15 antibody - N-terminal region validated by
WB using 293T cells lysate at 1: 500.