

## Product datasheet for **TA338900**

### OSTA (SLC51A) Rabbit Polyclonal Antibody

#### Product data:

Product Type:	Primary Antibodies
Applications:	WB
Recommended Dilution:	WB
Reactivity:	Human
Host:	Rabbit
Isotype:	IgG
Clonality:	Polyclonal
Immunogen:	The immunogen for anti-OSTalpha antibody: synthetic peptide directed towards the middle region of human OSTalpha. Synthetic peptide located within the following region: LLMLGPFQYAFKITLTLVGLFLVPDGIYDPADISEGSTALWINTFLGVS
Formulation:	Liquid. Purified antibody supplied in 1x PBS buffer with 0.09% (w/v) sodium azide and 2% sucrose. <i>Note that this product is shipped as lyophilized powder to China customers.</i>
Concentration:	lot specific
Purification:	Protein A purified
Conjugation:	Unconjugated
Storage:	Store at -20°C as received.
Stability:	Stable for 12 months from date of receipt.
Predicted Protein Size:	38 kDa
Gene Name:	solute carrier family 51 alpha subunit
Database Link:	<a href="#">NP_689885</a> <a href="#">Entrez Gene 200931 Human</a> <a href="#">Q86UW1</a>
Background:	SLC51A is essential component of the Ost-alpha/Ost-beta complex, a heterodimer that acts as the intestinal basolateral transporter responsible for bile acid export from enterocytes into portal blood.SLC51A efficiently transports the major species of bile acids.
Synonyms:	OSTA; OSTalpha

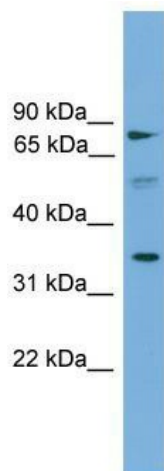


[View online »](#)

**Note:** Immunogen Sequence Homology: Dog: 100%; Horse: 100%; Human: 100%; Pig: 92%; Rat: 92%; Rabbit: 92%; Guinea pig: 92%; Bovine: 86%; Mouse: 83%

**Protein Families:** Transmembrane

**Product images:**



WB Suggested Anti-SLC51A Antibody Titration:  
0.2-1 ug/ml; Positive Control: COLO205 cell lysate