

## Product datasheet for **TA338899**

### NANP Rabbit Polyclonal Antibody

#### Product data:

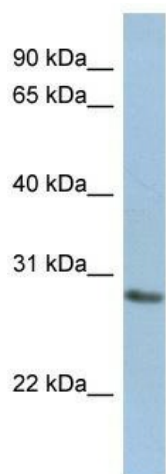
Product Type:	Primary Antibodies
Applications:	WB
Recommended Dilution:	WB
Reactivity:	Human
Host:	Rabbit
Isotype:	IgG
Clonality:	Polyclonal
Immunogen:	The immunogen for anti-NANP antibody: synthetic peptide directed towards the middle region of human NANP. Synthetic peptide located within the following region: VQPGDCVMVGDITLETDIQGGLNAGLKATVWINKNGIVPLKSSPVPHYMVS
Formulation:	Liquid. Purified antibody supplied in 1x PBS buffer with 0.09% (w/v) sodium azide and 2% sucrose. <i>Note that this product is shipped as lyophilized powder to China customers.</i>
Concentration:	lot specific
Purification:	Protein A purified
Conjugation:	Unconjugated
Storage:	Store at -20°C as received.
Stability:	Stable for 12 months from date of receipt.
Predicted Protein Size:	28 kDa
Gene Name:	N-acetylneuraminic acid phosphatase
Database Link:	<a href="#">NP_689880</a> <a href="#">Entrez Gene 140838 Human</a> <a href="#">Q8TBE9</a>
Background:	The specific function of this protein remains unknown.
Synonyms:	C20orf147; dj694B14.3; HDHD4
Note:	Immunogen Sequence Homology: Dog: 100%; Pig: 100%; Rat: 100%; Human: 100%; Mouse: 100%; Bovine: 100%; Rabbit: 100%; Guinea pig: 86%; Zebrafish: 79%



[View online »](#)

Protein Pathways: Amino sugar and nucleotide sugar metabolism, Metabolic pathways

### Product images:



WB Suggested Anti-NANP Antibody Titration: 0.2-1 ug/ml; ELISA Titer: 1: 312500; Positive Control: Jurkat cell lysate