

## Product datasheet for **TA338897**

### FAM76A Rabbit Polyclonal Antibody

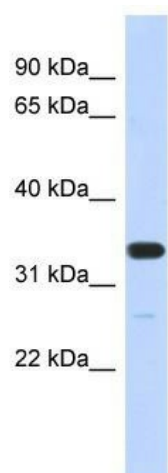
#### Product data:

Product Type:	Primary Antibodies
Applications:	WB
Recommended Dilution:	WB
Reactivity:	Human
Host:	Rabbit
Isotype:	IgG
Clonality:	Polyclonal
Immunogen:	The immunogen for anti-FAM76A antibody: synthetic peptide directed towards the N terminal of human FAM76A. Synthetic peptide located within the following region: MAALYACTKCHQRFPFALSQGQQLCKECRIAHPVVKCTYCRTEYQQESK
Formulation:	Liquid. Purified antibody supplied in 1x PBS buffer with 0.09% (w/v) sodium azide and 2% sucrose.
Concentration:	lot specific
Purification:	Protein A purified
Conjugation:	Unconjugated
Storage:	Store at -20°C as received.
Stability:	Stable for 12 months from date of receipt.
Predicted Protein Size:	35 kDa
Gene Name:	family with sequence similarity 76 member A
Database Link:	<a href="#">NP_689873</a> <a href="#">Entrez Gene 199870 Human</a> <a href="#">Q8TAV0</a>
Background:	The specific function of FAM76A is not yet known.
Synonyms:	RP3-426I6.1
Note:	Immunogen Sequence Homology: Dog: 100%; Pig: 100%; Rat: 100%; Human: 100%; Mouse: 100%; Bovine: 100%; Rabbit: 100%; Guinea pig: 100%; Zebrafish: 92%; Horse: 85%



[View online »](#)

## Product images:



WB Suggested Anti-FAM76A Antibody Titration:  
0.2-1 ug/ml; ELISA Titer: 1: 1562500; Positive  
Control: MCF7 cell lysate