

Product datasheet for **TA338895**

MLKL Rabbit Polyclonal Antibody

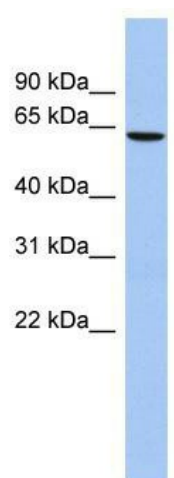
Product data:

Product Type:	Primary Antibodies
Applications:	WB
Recommended Dilution:	WB
Reactivity:	Human
Host:	Rabbit
Isotype:	IgG
Clonality:	Polyclonal
Immunogen:	The immunogen for anti-MLKL antibody: synthetic peptide directed towards the N terminal of human MLKL. Synthetic peptide located within the following region: DVWKELSLLLQVEQRMPVSPISQGASWAQEDQQDADEDRRAFQMLRRDNE
Formulation:	Liquid. Purified antibody supplied in 1x PBS buffer with 0.09% (w/v) sodium azide and 2% sucrose. <i>Note that this product is shipped as lyophilized powder to China customers.</i>
Concentration:	lot specific
Purification:	Protein A purified
Conjugation:	Unconjugated
Storage:	Store at -20°C as received.
Stability:	Stable for 12 months from date of receipt.
Predicted Protein Size:	54 kDa
Gene Name:	mixed lineage kinase domain-like
Database Link:	NP_689862 Entrez Gene 197259 Human Q8NB16
Background:	The specific function of this protein remains unknown.
Synonyms:	hMLKL
Note:	Immunogen Sequence Homology: Human: 100%; Horse: 91%; Rat: 90%; Bovine: 85%
Protein Families:	Druggable Genome, Protein Kinase



[View online »](#)

Product images:



WB Suggested Anti-MLKL Antibody Titration: 0.2-1 ug/ml; ELISA Titer: 1: 312500; Positive Control: Human kidney (Human 293T Whole Cell)