

Product datasheet for **TA338894**

C15orf33 (FAM227B) Rabbit Polyclonal Antibody

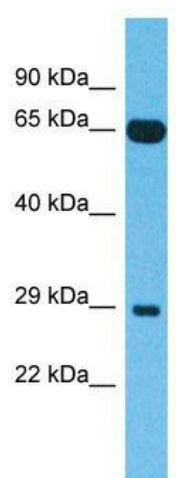
Product data:

| | |
|--------------------------------|---|
| Product Type: | Primary Antibodies |
| Applications: | WB |
| Recommended Dilution: | WB |
| Reactivity: | Human |
| Host: | Rabbit |
| Isotype: | IgG |
| Clonality: | Polyclonal |
| Immunogen: | The immunogen for Anti-FAM227B antibody is: synthetic peptide directed towards the N-terminal region of Human FAM227B. Synthetic peptide located within the following region: EYSLILQNHTSEIFKWKSMISETSSYRKLERYGEFLKKYHKKKIMLSDE |
| Formulation: | Liquid. Purified antibody supplied in 1x PBS buffer with 0.09% (w/v) sodium azide and 2% sucrose. <i>Note that this product is shipped as lyophilized powder to China customers.</i> |
| Concentration: | lot specific |
| Purification: | Protein A purified |
| Conjugation: | Unconjugated |
| Storage: | Store at -20°C as received. |
| Stability: | Stable for 12 months from date of receipt. |
| Predicted Protein Size: | 33 kDa |
| Gene Name: | family with sequence similarity 227 member B |
| Database Link: | NP_689860 Entrez Gene 196951 Human Q96M60 |
| Background: | The function of this protein remains unknown. |
| Synonyms: | C15orf33 |
| Note: | Immunogen Sequence Homology: Human: 100% |



[View online »](#)

Product images:



Host: Rabbit; Target Name: FAM227B; Sample
Tissue: Liver tumor lysates; Antibody Dilution: 1.0
ug/ml