

Product datasheet for **TA338893**

TENT5D Rabbit Polyclonal Antibody

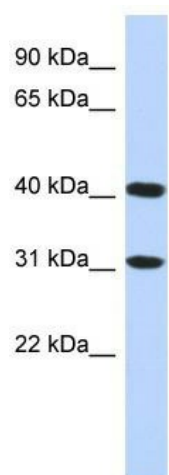
Product data:

| | |
|-------------------------|----------------------------------------------------------------------------------------------------------------------------------------------------------------------------------------------------------------------------|
| Product Type: | Primary Antibodies |
| Applications: | WB |
| Recommended Dilution: | WB |
| Reactivity: | Human |
| Host: | Rabbit |
| Isotype: | IgG |
| Clonality: | Polyclonal |
| Immunogen: | The immunogen for anti-FAM46D antibody: synthetic peptide directed towards the middle region of human FAM46D. Synthetic peptide located within the following region: LPNTQKVTCFYQPAPYFAAEARYPIYVIPEPPVVSFQPYHPLHFRGSNGM |
| Formulation: | Liquid. Purified antibody supplied in 1x PBS buffer with 0.09% (w/v) sodium azide and 2% sucrose. <i>Note that this product is shipped as lyophilized powder to China customers.</i> |
| Concentration: | lot specific |
| Purification: | Protein A purified |
| Conjugation: | Unconjugated |
| Storage: | Store at -20°C as received. |
| Stability: | Stable for 12 months from date of receipt. |
| Predicted Protein Size: | 44 kDa |
| Gene Name: | family with sequence similarity 46 member D |
| Database Link: | NP_689843 Entrez Gene 169966 Human Q8NEK8 |
| Background: | The specific function of FAM46D is not yet known. |
| Synonyms: | CT1.26; CT112 |
| Note: | Immunogen Sequence Homology: Dog: 100%; Pig: 100%; Human: 100%; Bovine: 100% |



[View online »](#)

Product images:



WB Suggested Anti-FAM46D Antibody Titration:
0.2-1 ug/ml; ELISA Titer: 1: 62500; Positive
Control: HepG2 cell lysate