

Product datasheet for **TA338892**

TENT5A Rabbit Polyclonal Antibody

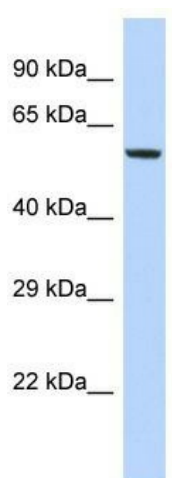
Product data:

Product Type:	Primary Antibodies
Applications:	WB
Recommended Dilution:	WB
Reactivity:	Human
Host:	Rabbit
Isotype:	IgG
Clonality:	Polyclonal
Immunogen:	The immunogen for Anti-FAM46A antibody is: synthetic peptide directed towards the middle region of Human FAM46A. Synthetic peptide located within the following region: SETIPIHGGRGNFPTLELQPSLIVKVRRRLAEKRIGVRDVRNLNGSAASHV
Formulation:	Liquid. Purified antibody supplied in 1x PBS buffer with 0.09% (w/v) sodium azide and 2% sucrose.
Concentration:	lot specific
Purification:	Protein A purified
Conjugation:	Unconjugated
Storage:	Store at -20°C as received.
Stability:	Stable for 12 months from date of receipt.
Predicted Protein Size:	57 kDa
Gene Name:	family with sequence similarity 46 member A
Database Link:	NP_060103 Entrez Gene 55603 Human Q96IP4
Background:	The function of this protein remains unknown.
Synonyms:	C6orf37; XTP11
Note:	Immunogen Sequence Homology: Human: 100%; Dog: 93%; Rat: 93%; Mouse: 92%; Zebrafish: 92%; Pig: 86%; Horse: 86%; Bovine: 86%; Rabbit: 85%; Guinea pig: 85%



[View online »](#)

Product images:



Host: Rabbit; Target Name: FAM46A; Sample
Tissue: HepG2 Whole cell lysates; Antibody
Dilution: 1.0 ug/ml