

Product datasheet for **TA338889**

WBP2NL Rabbit Polyclonal Antibody

Product data:

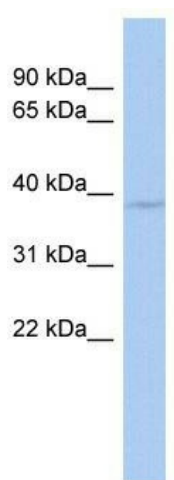
Product Type:	Primary Antibodies
Applications:	WB
Recommended Dilution:	WB
Reactivity:	Human
Host:	Rabbit
Isotype:	IgG
Clonality:	Polyclonal
Immunogen:	The immunogen for anti-WBP2NL antibody: synthetic peptide directed towards the middle region of human WBP2NL. Synthetic peptide located within the following region: GYGAPPLGYGAPPAGNEGPPAGYRASPAGSGARPHESTAAQAPENEASLP
Formulation:	Liquid. Purified antibody supplied in 1x PBS buffer with 0.09% (w/v) sodium azide and 2% sucrose. <i>Note that this product is shipped as lyophilized powder to China customers.</i>
Concentration:	lot specific
Purification:	Protein A purified
Conjugation:	Unconjugated
Storage:	Store at -20°C as received.
Stability:	Stable for 12 months from date of receipt.
Predicted Protein Size:	32 kDa
Gene Name:	WBP2 N-terminal like
Database Link:	NP_689826 Entrez Gene 164684 Human Q6ICG8
Background:	WBP2NL may play a role in meiotic resumption and pronuclear formation, mediated by a WW domain-signaling pathway during fertilization. WBP2NL is a sperm-specific WW domain-binding protein that promotes meiotic resumption and pronuclear development during oocyte fertilization (Wu et al., 2007 [PubMed 17289678]). [supplied by OMIM]
Synonyms:	GRAMD7; PAWP



[View online »](#)

Note: Immunogen Sequence Homology: Human: 100%

Product images:



WB Suggested Anti-WBP2NL Antibody Titration:
0.2-1 ug/ml; ELISA Titer: 1: 312500; Positive
Control: Human Stomach