

## Product datasheet for **TA33887**

### CCDC116 Rabbit Polyclonal Antibody

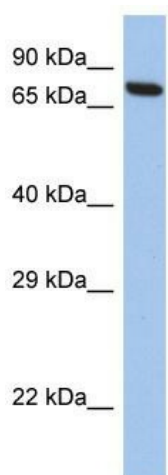
#### Product data:

|                         |  |
|-------------------------|--|
| Product Type:           | Primary Antibodies   |
| Applications:           | WB   |
| Recommended Dilution:   | WB   |
| Reactivity:             | Human  |
| Host:                   | Rabbit   |
| Isotype:                | IgG  |
| Clonality:              | Polyclonal   |
| Immunogen:              | The immunogen for Anti-CCDC116 antibody is: synthetic peptide directed towards the C-terminal region of Human CCDC116. Synthetic peptide located within the following region: VQQEPATHTAQDQATEPCRSLYTNLPASRQLSPLEPKLYMSACTGMGSSP |
| Formulation:            | Liquid. Purified antibody supplied in 1x PBS buffer with 0.09% (w/v) sodium azide and 2% sucrose.<br><i>Note that this product is shipped as lyophilized powder to China customers.</i>  |
| Concentration:          | lot specific   |
| Purification:           | Protein A purified   |
| Conjugation:            | Unconjugated   |
| Storage:                | Store at -20°C as received.  |
| Stability:              | Stable for 12 months from date of receipt.   |
| Predicted Protein Size: | 67 kDa   |
| Gene Name:              | coiled-coil domain containing 116  |
| Database Link:          | <a href="#">NP_689825</a><br><a href="#">Entrez Gene 164592 Human</a><br><a href="#">Q8IYX3</a>  |
| Background:             | The function of this protein remains unknown.  |
| Synonyms:               | FLJ36046   |
| Note:                   | Immunogen Sequence Homology: Human: 100%   |



[View online »](#)

## Product images:



Host: Rabbit

Target Name: CCDC116

Sample Tissue: SH-SY5Y Cell Lysate

Antibody Dilution: 1.0 µg/ml

Host: Rabbit; Target Name: CCDC116; Sample Tissue: SH-SY5Y Whole Cell lysates; Antibody Dilution: 1.0 µg/ml