

Product datasheet for **TA33885**

C1orf55 (SDE2) Rabbit Polyclonal Antibody

Product data:

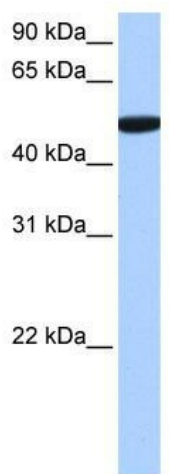
Product Type:	Primary Antibodies
Applications:	WB
Recommended Dilution:	WB
Reactivity:	Human
Host:	Rabbit
Isotype:	IgG
Clonality:	Polyclonal
Immunogen:	The immunogen for anti-C1orf55 antibody: synthetic peptide directed towards the C terminal of human C1orf55. Synthetic peptide located within the following region: AFTSVAELELLGLEKLKCELMALGLKCGGTLQERAARLFSVRGLAKEQID
Formulation:	Liquid. Purified antibody supplied in 1x PBS buffer with 0.09% (w/v) sodium azide and 2% sucrose.
Concentration:	lot specific
Purification:	Protein A purified
Conjugation:	Unconjugated
Storage:	Store at -20°C as received.
Stability:	Stable for 12 months from date of receipt.
Predicted Protein Size:	50 kDa
Gene Name:	SDE2 telomere maintenance homolog
Database Link:	NP_689821 Entrez Gene 163859 Human Q6IQ49
Background:	SDE2 is phosphorylated upon DNA damage, probably by ATM or ATR. The exact function of SDE2 remains unknown.
Synonyms:	C1orf55; dj671D7.1



[View online »](#)

Note: Immunogen Sequence Homology: Dog: 100%; Pig: 100%; Rat: 100%; Horse: 100%; Human: 100%; Mouse: 100%; Bovine: 100%; Zebrafish: 100%; Guinea pig: 100%; Goat: 92%; Rabbit: 92%

Product images:



WB Suggested Anti-SDE2 Antibody Titration: 0.2-1 ug/ml; Positive Control: 721_B cell lysate