

Product datasheet for **TA338884**

C1orf177 (LEXM) Rabbit Polyclonal Antibody

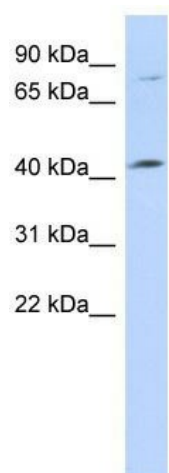
Product data:

Product Type:	Primary Antibodies
Applications:	WB
Recommended Dilution:	WB
Reactivity:	Human
Host:	Rabbit
Isotype:	IgG
Clonality:	Polyclonal
Immunogen:	The immunogen for anti-C1orf177 antibody: synthetic peptide directed towards the middle region of human C1orf177. Synthetic peptide located within the following region: YSMQKKKPRELMNFKSFVEELNSHHNKKHGVFSKLPRNPKTPTERIYWAN
Formulation:	Liquid. Purified antibody supplied in 1x PBS buffer with 0.09% (w/v) sodium azide and 2% sucrose.
Concentration:	lot specific
Purification:	Protein A purified
Conjugation:	Unconjugated
Storage:	Store at -20°C as received.
Stability:	Stable for 12 months from date of receipt.
Predicted Protein Size:	47 kDa
Gene Name:	lymphocyte expansion molecule
Database Link:	NP_689820 Entrez Gene 163747 Human Q3ZCV2
Background:	The specific function of C1orf177 is not yet known.
Synonyms:	FLJ40201
Note:	Immunogen Sequence Homology: Human: 100%; Rabbit: 93%; Horse: 86%; Bovine: 86%; Dog: 79%; Rat: 79%; Mouse: 79%



[View online »](#)

Product images:



WB Suggested Anti-C1orf177 Antibody Titration:
0.2-1 ug/ml; ELISA Titer: 1: 1562500; Positive
Control: 721_B cell lysate