

## Product datasheet for **TA338880**

### **PAS1C1 (LMNTD1) Rabbit Polyclonal Antibody**

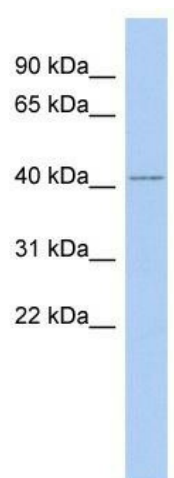
#### **Product data:**

Product Type:	Primary Antibodies
Applications:	WB
Recommended Dilution:	WB
Reactivity:	Human
Host:	Rabbit
Isotype:	IgG
Clonality:	Polyclonal
Immunogen:	The immunogen for anti-IFLTD1 antibody: synthetic peptide directed towards the middle region of human IFLTD1. Synthetic peptide located within the following region: PPTVFPNRSPWCQNPYVSAHPYCPLIEPHNTSTAGGRLDRQPRSRSTRPN
Formulation:	Liquid. Purified antibody supplied in 1x PBS buffer with 0.09% (w/v) sodium azide and 2% sucrose.
Concentration:	lot specific
Purification:	Protein A purified
Conjugation:	Unconjugated
Storage:	Store at -20°C as received.
Stability:	Stable for 12 months from date of receipt.
Predicted Protein Size:	43 kDa
Gene Name:	lamin tail domain containing 1
Database Link:	<a href="#">NP_689803</a> <a href="#">Entrez Gene 160492 Human</a> <a href="#">Q8N9Z9</a>
Background:	The specific function of this protein remains unknown.
Synonyms:	IFLTD1; PAS1C1
Note:	Immunogen Sequence Homology: Human: 100%



[View online »](#)

## Product images:



WB Suggested Anti-IFLTD1 Antibody Titration:  
0.2-1 ug/ml; ELISA Titer: 1: 1562500; Positive  
Control: Human Intestine