

Product datasheet for **TA338878**

C11orf65 Rabbit Polyclonal Antibody

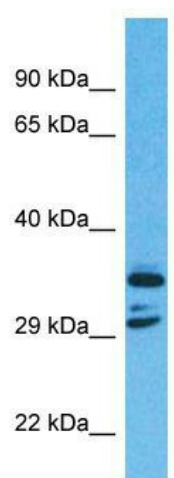
Product data:

Product Type:	Primary Antibodies
Applications:	WB
Recommended Dilution:	WB
Reactivity:	Human
Host:	Rabbit
Isotype:	IgG
Clonality:	Polyclonal
Immunogen:	The immunogen for Anti-C11orf65 antibody is: synthetic peptide directed towards the N-terminal region of Human C11orf65. Synthetic peptide located within the following region: YAKLPAKHTSHNKNDHLQEEDHSGWYHRIENNGWRPVSDTFWLSTDGMVV
Formulation:	Liquid. Purified antibody supplied in 1x PBS buffer with 0.09% (w/v) sodium azide and 2% sucrose. <i>Note that this product is shipped as lyophilized powder to China customers.</i>
Concentration:	lot specific
Purification:	Protein A purified
Conjugation:	Unconjugated
Storage:	Store at -20°C as received.
Stability:	Stable for 12 months from date of receipt.
Predicted Protein Size:	37 kDa
Gene Name:	chromosome 11 open reading frame 65
Database Link:	NP_689800 Entrez Gene 160140 Human Q8NCR3
Background:	The function of this protein remains unknown.
Synonyms:	MGC33948
Note:	Immunogen Sequence Homology: Human: 100%; Pig: 86%; Horse: 77%



[View online »](#)

Product images:



Host: Rabbit; Target Name: C11orf65; Sample
Tissue: Stomach tumor lysates; Antibody Dilution:
1.0 ug/ml