

Product datasheet for **TA338876**

MOSPD2 Rabbit Polyclonal Antibody

Product data:

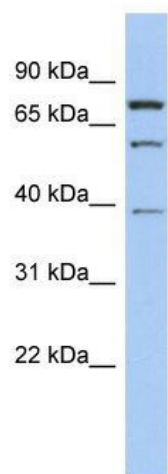
Product Type:	Primary Antibodies
Applications:	WB
Recommended Dilution:	WB
Reactivity:	Human
Host:	Rabbit
Isotype:	IgG
Clonality:	Polyclonal
Immunogen:	The immunogen for anti-MOSPD2 antibody: synthetic peptide directed towards the middle region of human MOSPD2. Synthetic peptide located within the following region: TPLCENGPITSEDETSSKEDIESDGKETLETISNEEQTPLLKKINPTEST
Formulation:	Liquid. Purified antibody supplied in 1x PBS buffer with 0.09% (w/v) sodium azide and 2% sucrose. <i>Note that this product is shipped as lyophilized powder to China customers.</i>
Concentration:	lot specific
Purification:	Protein A purified
Conjugation:	Unconjugated
Storage:	Store at -20°C as received.
Stability:	Stable for 12 months from date of receipt.
Predicted Protein Size:	60 kDa
Gene Name:	motile sperm domain containing 2
Database Link:	NP_689794 Entrez Gene 158747 Human Q8NHP6
Background:	The specific function of the protein remains unknown.
Synonyms:	DKFZp686C1553; MGC26706
Note:	Immunogen Sequence Homology: Horse: 100%; Human: 100%; Rabbit: 100%; Dog: 93%; Pig: 93%; Rat: 93%; Mouse: 93%; Bovine: 93%; Guinea pig: 93%



[View online »](#)

Protein Families: Transmembrane

Product images:



WB Suggested Anti-MOSPD2 Antibody Titration:
0.2-1 ug/ml; ELISA Titer: 1: 62500; Positive
Control: Jurkat cell lysate