

## Product datasheet for **TA338874**

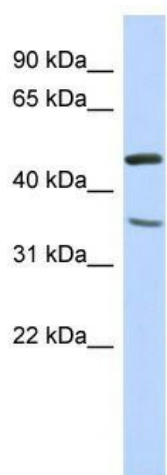
### FAM81B Rabbit Polyclonal Antibody

#### Product data:

Product Type:	Primary Antibodies
Applications:	WB
Recommended Dilution:	WB
Reactivity:	Human
Host:	Rabbit
Isotype:	IgG
Clonality:	Polyclonal
Immunogen:	The immunogen for anti-FAM81B antibody: synthetic peptide directed towards the N terminal of human FAM81B. Synthetic peptide located within the following region: MQLQLGLTLASSEKRKKSQRLFFKNIKSTKNKAGKASIMSSDTNVNKSAS
Formulation:	Liquid. Purified antibody supplied in 1x PBS buffer with 0.09% (w/v) sodium azide and 2% sucrose.
Concentration:	lot specific
Purification:	Protein A purified
Conjugation:	Unconjugated
Storage:	Store at -20°C as received.
Stability:	Stable for 12 months from date of receipt.
Predicted Protein Size:	52 kDa
Gene Name:	family with sequence similarity 81 member B
Database Link:	<a href="#">NP_689761</a> <a href="#">Entrez Gene 153643 Human</a> <a href="#">Q96LP2</a>
Background:	The specific function of FAM81B is not yet known.
Synonyms:	FLJ25333
Note:	Immunogen Sequence Homology: Human: 100%



[View online »](#)

**Product images:**

WB Suggested Anti-FAM81B Antibody Titration:  
0.2-1 ug/ml; ELISA Titer: 1: 1562500; Positive  
Control: Human Liver