

Product datasheet for **TA338873**

BTNL9 Rabbit Polyclonal Antibody

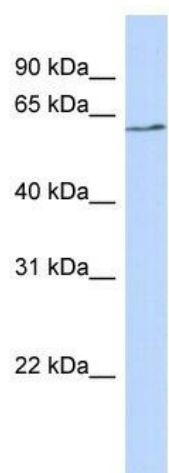
Product data:

Product Type:	Primary Antibodies
Applications:	WB
Recommended Dilution:	WB
Reactivity:	Human
Host:	Rabbit
Isotype:	IgG
Clonality:	Polyclonal
Immunogen:	The immunogen for anti-BTNL9 antibody: synthetic peptide directed towards the N terminal of human BTNL9. Synthetic peptide located within the following region: EIRWFRSQTFNVVHLYQEQQELPGRQMPAFRNRTKLVKDDIAYGSVVLQL
Formulation:	Liquid. Purified antibody supplied in 1x PBS buffer with 0.09% (w/v) sodium azide and 2% sucrose. <i>Note that this product is shipped as lyophilized powder to China customers.</i>
Concentration:	lot specific
Purification:	Protein A purified
Conjugation:	Unconjugated
Storage:	Store at -20°C as received.
Stability:	Stable for 12 months from date of receipt.
Predicted Protein Size:	60 kDa
Gene Name:	butyrophilin like 9
Database Link:	NP_689760 Entrez Gene 153579 Human Q6UXG8
Background:	The specific function of BTNL9 is not yet known.
Synonyms:	BTN3; BTN8; VDLS1900
Note:	Immunogen Sequence Homology: Human: 100%; Horse: 79%
Protein Families:	Druggable Genome, Transmembrane



[View online »](#)

Product images:



WB Suggested Anti-BTNL9 Antibody Titration: 0.2-1 ug/ml; ELISA Titer: 1: 1562500; Positive Control: 293T cell lysate