

Product datasheet for **TA338870**

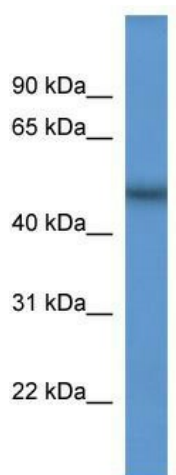
Scfd2 Rabbit Polyclonal Antibody

Product data:

Product Type:	Primary Antibodies
Applications:	WB
Recommended Dilution:	WB
Reactivity:	Mouse
Host:	Rabbit
Isotype:	IgG
Clonality:	Polyclonal
Immunogen:	The immunogen for anti-Scfd2 antibody: synthetic peptide corresponding to a region of Mouse. Synthetic peptide located within the following region: LVSGLSSLCEHLGVREECFAVGPLSRVIATDLANYAPAKNRKKTATGRAS
Formulation:	Liquid. Purified antibody supplied in 1x PBS buffer with 0.09% (w/v) sodium azide and 2% sucrose. <i>Note that this product is shipped as lyophilized powder to China customers.</i>
Concentration:	lot specific
Purification:	Protein A purified
Conjugation:	Unconjugated
Storage:	Store at -20°C as received.
Stability:	Stable for 12 months from date of receipt.
Predicted Protein Size:	52 kDa
Gene Name:	Sec1 family domain containing 2
Database Link:	NP_848787 Entrez Gene 212986 Mouse Q8BTY8
Background:	The function of this protein remains unknown.
Synonyms:	FLJ21060; FLJ39514; STXBP1L1
Note:	Immunogen Sequence Homology: Human: 100%; Mouse: 100%; Rat: 93%; Horse: 93%; Rabbit: 93%; Dog: 86%; Pig: 86%; Bovine: 86%



[View online »](#)

Product images:

WB Suggested Anti-Scfd2 Antibody Titration: 0.2-1 ug/ml; ELISA Titer: 1: 1562500; Positive Control: Mouse Kidney