

Product datasheet for **TA338869**

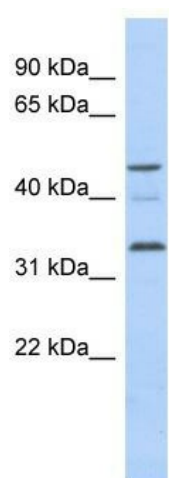
CCNYL1 Rabbit Polyclonal Antibody

Product data:

Product Type:	Primary Antibodies
Applications:	WB
Recommended Dilution:	WB
Reactivity:	Human
Host:	Rabbit
Isotype:	IgG
Clonality:	Polyclonal
Immunogen:	The immunogen for anti-CCNYL1 antibody: synthetic peptide directed towards the N terminal of human CCNYL1. Synthetic peptide located within the following region: TVKCVTLAIYYHIKNRDANRSLDIFDERSHPLTREKVPEEYFKHDPEHKF
Formulation:	Liquid. Purified antibody supplied in 1x PBS buffer with 0.09% (w/v) sodium azide and 2% sucrose. <i>Note that this product is shipped as lyophilized powder to China customers.</i>
Concentration:	lot specific
Purification:	Protein A purified
Conjugation:	Unconjugated
Storage:	Store at -20°C as received.
Stability:	Stable for 12 months from date of receipt.
Predicted Protein Size:	33 kDa
Gene Name:	cyclin Y like 1
Database Link:	NP_689736 Entrez Gene 151195 Human Q8N7R7
Background:	The specific function of CCNYL1 is not yet known.
Synonyms:	FLJ40432
Note:	Immunogen Sequence Homology: Dog: 100%; Pig: 100%; Rat: 100%; Goat: 100%; Human: 100%; Mouse: 100%; Bovine: 100%; Rabbit: 100%; Guinea pig: 100%; Horse: 93%



[View online »](#)

Product images:

WB Suggested Anti-CCNYL1 Antibody Titration:
0.2-1 ug/ml; ELISA Titer: 1: 62500; Positive
Control: Human brain