

Product datasheet for **TA338868**

KANSL1L Rabbit Polyclonal Antibody

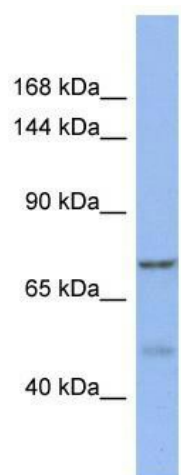
Product data:

Product Type:	Primary Antibodies
Applications:	WB
Recommended Dilution:	WB
Reactivity:	Human
Host:	Rabbit
Isotype:	IgG
Clonality:	Polyclonal
Immunogen:	The immunogen for Anti-KANSL1L antibody is: synthetic peptide directed towards the C-terminal region of Human KANSL1L. Synthetic peptide located within the following region: TWLQAQISDLECKIQQLTDIHRQIRASKGIVVLEECQLPKDILKKQMQFA
Formulation:	Liquid. Purified antibody supplied in 1x PBS buffer with 0.09% (w/v) sodium azide and 2% sucrose. <i>Note that this product is shipped as lyophilized powder to China customers.</i>
Concentration:	lot specific
Purification:	Protein A purified
Conjugation:	Unconjugated
Storage:	Store at -20°C as received.
Stability:	Stable for 12 months from date of receipt.
Predicted Protein Size:	77 kDa
Gene Name:	KAT8 regulatory NSL complex subunit 1 like
Database Link:	NP_689732 Entrez Gene 151050 Human A0AUZ9
Background:	The function of this protein remains unknown.
Synonyms:	C2orf67; MSL1v2
Note:	Immunogen Sequence Homology: Pig: 100%; Rat: 100%; Human: 100%; Mouse: 100%; Guinea pig: 100%; Dog: 93%; Horse: 93%; Bovine: 93%; Rabbit: 93%



[View online »](#)

Product images:



Host: Rabbit; Target Name: KANSL1L; Sample
Tissue: Fetal spleen lysates; Antibody Dilution: 1.0
ug/ml