

Product datasheet for **TA338867**

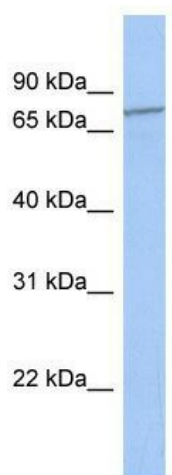
ENTHD1 Rabbit Polyclonal Antibody

Product data:

Product Type:	Primary Antibodies
Applications:	WB
Recommended Dilution:	WB
Reactivity:	Human
Host:	Rabbit
Isotype:	IgG
Clonality:	Polyclonal
Immunogen:	The immunogen for anti-ENTHD1 antibody: synthetic peptide directed towards the middle region of human ENTHD1. Synthetic peptide located within the following region: RAIARLHEDLSTVIQELNVINNILMSMLNSSQISQSSQVPQSSEGSSDQ
Formulation:	Liquid. Purified antibody supplied in 1x PBS buffer with 0.09% (w/v) sodium azide and 2% sucrose. <i>Note that this product is shipped as lyophilized powder to China customers.</i>
Concentration:	lot specific
Purification:	Protein A purified
Conjugation:	Unconjugated
Storage:	Store at -20°C as received.
Stability:	Stable for 12 months from date of receipt.
Predicted Protein Size:	67 kDa
Gene Name:	ENTH domain containing 1
Database Link:	NP_689725 Entrez Gene 150350 Human Q8IYW4
Background:	The specific function of ENTHD1 is not yet known.
Synonyms:	CACNA1I; dj370M22.3
Note:	Immunogen Sequence Homology: Human: 100%



[View online »](#)

Product images:

WB Suggested Anti-ENTHD1 Antibody Titration:
0.2-1 ug/ml; ELISA Titer: 1: 62500; Positive
Control: Jurkat cell lysate