

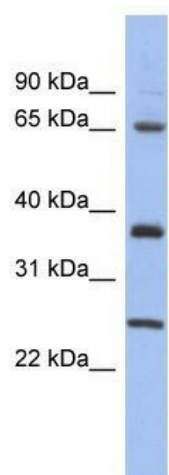
## Product datasheet for **TA338866**

### HORMAD2 Rabbit Polyclonal Antibody

#### Product data:

Product Type:	Primary Antibodies
Applications:	WB
Recommended Dilution:	WB
Reactivity:	Human
Host:	Rabbit
Isotype:	IgG
Clonality:	Polyclonal
Immunogen:	The immunogen for anti-HORMAD2 antibody: synthetic peptide directed towards the middle region of human HORMAD2. Synthetic peptide located within the following region: YTDPMGSEKVTEMYQFKFKYTKEGATMDFDSHSSSTSFESGTNNEDIKKA
Formulation:	Liquid. Purified antibody supplied in 1x PBS buffer with 0.09% (w/v) sodium azide and 2% sucrose.
Concentration:	lot specific
Purification:	Protein A purified
Conjugation:	Unconjugated
Storage:	Store at -20°C as received.
Stability:	Stable for 12 months from date of receipt.
Predicted Protein Size:	35 kDa
Gene Name:	HORMA domain containing 2
Database Link:	<a href="#">NP_689723</a> <a href="#">Entrez Gene 150280 Human</a> <a href="#">Q8N7B1</a>
Background:	The specific function of the protein remains unknown.
Synonyms:	CT46.2
Note:	Immunogen Sequence Homology: Human: 100%; Pig: 93%; Rat: 93%; Bovine: 93%; Guinea pig: 93%; Dog: 92%; Horse: 86%; Mouse: 86%


[View online »](#)

**Product images:**

WB Suggested Anti-HORMAD2 Antibody Titration:  
0.2-1 ug/ml; ELISA Titer: 1: 62500; Positive  
Control: Human Placenta