

## Product datasheet for **TA338865**

### **HORMAD2 Rabbit Polyclonal Antibody**

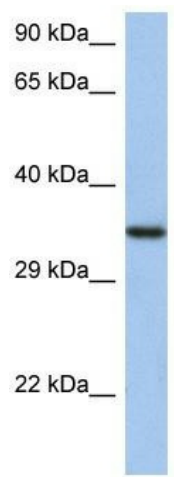
#### **Product data:**

Product Type:	Primary Antibodies
Applications:	WB
Recommended Dilution:	WB
Reactivity:	Human
Host:	Rabbit
Isotype:	IgG
Clonality:	Polyclonal
Immunogen:	The immunogen for anti-HORMAD2 antibody: synthetic peptide directed towards the N terminal of human HORMAD2. Synthetic peptide located within the following region: VKKLFATSISCITYLRGLFPESYGERHLDDLSLKILREDKKCPGSLHII
Formulation:	Liquid. Purified antibody supplied in 1x PBS buffer with 0.09% (w/v) sodium azide and 2% sucrose.
Concentration:	lot specific
Purification:	Protein A purified
Conjugation:	Unconjugated
Storage:	Store at -20°C as received.
Stability:	Stable for 12 months from date of receipt.
Predicted Protein Size:	35 kDa
Gene Name:	HORMA domain containing 2
Database Link:	<a href="#">NP_689723</a> <a href="#">Entrez Gene 150280 Human</a> <a href="#">Q8N7B1</a>
Background:	The specific function of the protein remains unknown.
Synonyms:	CT46.2
Note:	Immunogen Sequence Homology: Dog: 100%; Pig: 100%; Rat: 100%; Horse: 100%; Human: 100%; Bovine: 100%; Rabbit: 100%; Yeast: 82%; Mouse: 79%



[View online »](#)

## Product images:



WB Suggested Anti-HORMAD2 Antibody Titration:  
0.2-1 ug/ml; ELISA Titer: 1: 62500; Positive  
Control: HT1080 cell lysate