

Product datasheet for **TA338862**

C19orf18 Rabbit Polyclonal Antibody

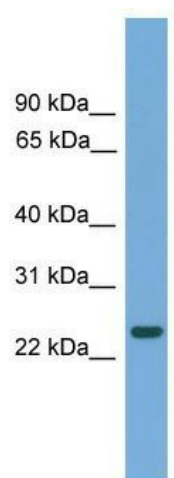
Product data:

Product Type:	Primary Antibodies
Applications:	WB
Recommended Dilution:	WB
Reactivity:	Human
Host:	Rabbit
Isotype:	IgG
Clonality:	Polyclonal
Immunogen:	The immunogen for anti-C19orf18 antibody: synthetic peptide directed towards the N terminal of human C19orf18. Synthetic peptide located within the following region: NITGLPGSKRSQPPRNITKEPKVFFHKTQLPGIQGAASRSTAASPTNPMK
Formulation:	Liquid. Purified antibody supplied in 1x PBS buffer with 0.09% (w/v) sodium azide and 2% sucrose. <i>Note that this product is shipped as lyophilized powder to China customers.</i>
Concentration:	lot specific
Purification:	Protein A purified
Conjugation:	Unconjugated
Storage:	Store at -20°C as received.
Stability:	Stable for 12 months from date of receipt.
Predicted Protein Size:	24 kDa
Gene Name:	chromosome 19 open reading frame 18
Database Link:	NP_689687 Entrez Gene 147685 Human Q8NEA5
Background:	The function of this protein remains unknown.
Synonyms:	MGC41906
Note:	Immunogen Sequence Homology: Human: 100%
Protein Families:	Transmembrane



[View online »](#)

Product images:



WB Suggested Anti-C19orf18 Antibody Titration:
0.2-1 ug/ml; Positive Control: Human heart