

## Product datasheet for **TA338860**

### PROCA1 Rabbit Polyclonal Antibody

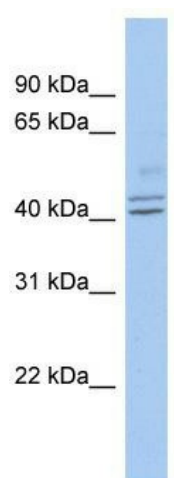
#### Product data:

Product Type:	Primary Antibodies
Applications:	WB
Recommended Dilution:	WB
Reactivity:	Human
Host:	Rabbit
Isotype:	IgG
Clonality:	Polyclonal
Immunogen:	The immunogen for anti-PROCA1 antibody: synthetic peptide directed towards the middle region of human PROCA1. Synthetic peptide located within the following region: GELSSDIVESSSPRKRENTVQAKKTGAKPSQARKVNKRKSPPGSNPNLS
Formulation:	Liquid. Purified antibody supplied in 1x PBS buffer with 0.09% (w/v) sodium azide and 2% sucrose. <i>Note that this product is shipped as lyophilized powder to China customers.</i>
Concentration:	lot specific
Purification:	Protein A purified
Conjugation:	Unconjugated
Storage:	Store at -20°C as received.
Stability:	Stable for 12 months from date of receipt.
Predicted Protein Size:	38 kDa
Gene Name:	protein interacting with cyclin A1
Database Link:	<a href="#">NP_689678</a> <a href="#">Entrez Gene 147011 Human</a> <a href="#">Q8NCQ7</a>
Background:	The specific function of this protein remains unknown.
Synonyms:	MGC39650
Note:	Immunogen Sequence Homology: Human: 100%; Pig: 92%; Horse: 92%; Rabbit: 86%
Protein Families:	Druggable Genome



[View online »](#)

## Product images:



WB Suggested Anti-PROCA1 Antibody Titration:  
0.2-1 ug/ml; ELISA Titer: 1: 62500; Positive  
Control: COLO205 cell lysate