

Product datasheet for **TA338857**

Fam81a Rabbit Polyclonal Antibody

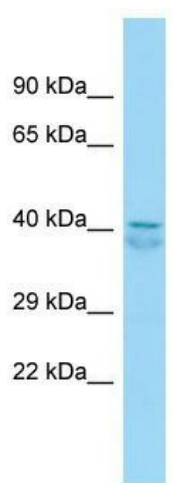
Product data:

Product Type:	Primary Antibodies
Applications:	WB
Recommended Dilution:	WB
Reactivity:	Rat
Host:	Rabbit
Isotype:	IgG
Clonality:	Polyclonal
Immunogen:	The immunogen for Anti-Fam81a antibody is: synthetic peptide directed towards the middle region of Rat Fam81a. Synthetic peptide located within the following region: LSAEHKTTYEGLQHLNKEQQAALKILETKIKDAEGQISQLLNRVDSLISE
Formulation:	Liquid. Purified antibody supplied in 1x PBS buffer with 0.09% (w/v) sodium azide and 2% sucrose.
Concentration:	lot specific
Purification:	Protein A purified
Conjugation:	Unconjugated
Storage:	Store at -20°C as received.
Stability:	Stable for 12 months from date of receipt.
Predicted Protein Size:	40 kDa
Gene Name:	family with sequence similarity 81, member A
Database Link:	NP_001101633 Entrez Gene 315789 Rat
Background:	The function of this protein remains unknown.
Synonyms:	MGC26690



Note: Immunogen Sequence Homology: Dog: 100%; Pig: 100%; Rat: 100%; Horse: 100%; Human: 100%; Bovine: 100%; Mouse: 93%; Rabbit: 93%; Guinea pig: 93%

Product images:



WB Suggested Anti-Fam81a Antibody;
Titration: 1.0 ug/ml; Positive Control: Rat Kidney