

Product datasheet for **TA338856**

FAM81A Rabbit Polyclonal Antibody

Product data:

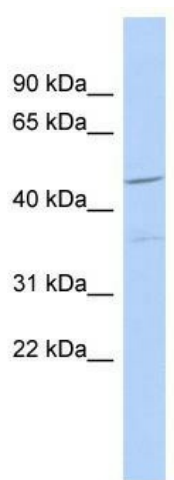
Product Type:	Primary Antibodies
Applications:	WB
Recommended Dilution:	WB
Reactivity:	Human
Host:	Rabbit
Isotype:	IgG
Clonality:	Polyclonal
Immunogen:	The immunogen for anti-FAM81A antibody: synthetic peptide directed towards the N terminal of human FAM81A. Synthetic peptide located within the following region: GDRLARLFLEEHIRNITAIVKQLNRDIEVLQEQRARDNISYGTNSALKT
Formulation:	Liquid. Purified antibody supplied in 1x PBS buffer with 0.09% (w/v) sodium azide and 2% sucrose.
Concentration:	lot specific
Purification:	Protein A purified
Conjugation:	Unconjugated
Storage:	Store at -20°C as received.
Stability:	Stable for 12 months from date of receipt.
Predicted Protein Size:	42 kDa
Gene Name:	family with sequence similarity 81 member A
Database Link:	NP_689663 Entrez Gene 145773 Human Q8TBF8
Background:	The specific function of this protein remains unknown.



Synonyms: MGC26690

Note: Immunogen Sequence Homology: Dog: 100%; Pig: 100%; Rat: 100%; Horse: 100%; Human: 100%; Mouse: 100%; Bovine: 100%; Rabbit: 100%; Guinea pig: 100%

Product images:



WB Suggested Anti-FAM81A Antibody Titration:
0.2-1 ug/ml; ELISA Titer: 1: 312500; Positive
Control: Human brain