

Product datasheet for **TA338855**

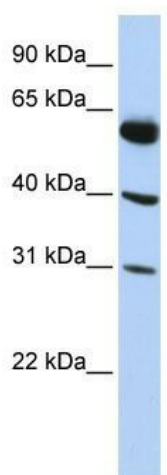
LYSMD4 Rabbit Polyclonal Antibody

Product data:

Product Type:	Primary Antibodies
Applications:	WB
Recommended Dilution:	WB
Reactivity:	Human
Host:	Rabbit
Isotype:	IgG
Clonality:	Polyclonal
Immunogen:	The immunogen for anti-LYSMD4 antibody: synthetic peptide directed towards the N terminal of human LYSMD4. Synthetic peptide located within the following region: PRREQVTWCCCSGSWPRRTASTSWRCSMAANTFYFRPNGAGDTRQNLIPD
Formulation:	Liquid. Purified antibody supplied in 1x PBS buffer with 0.09% (w/v) sodium azide and 2% sucrose. <i>Note that this product is shipped as lyophilized powder to China customers.</i>
Concentration:	lot specific
Purification:	Protein A purified
Conjugation:	Unconjugated
Storage:	Store at -20°C as received.
Stability:	Stable for 12 months from date of receipt.
Predicted Protein Size:	32 kDa
Gene Name:	LysM domain containing 4
Database Link:	NP_689662 Entrez Gene 145748 Human Q5XG99
Background:	The specific function of LYSMD4 is not yet known.
Synonyms:	FLJ33008; MGC99501
Note:	Immunogen Sequence Homology: Human: 100%
Protein Families:	Transmembrane



[View online »](#)

Product images:

WB Suggested Anti-LYSMD4 Antibody Titration:
0.2-1 ug/ml; ELISA Titer: 1: 1562500; Positive
Control: HepG2 cell lysate