

Product datasheet for **TA338854**

LRFN5 Rabbit Polyclonal Antibody

Product data:

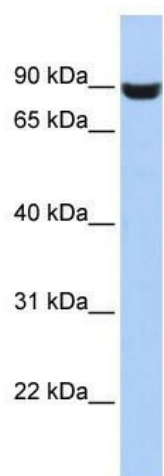
Product Type:	Primary Antibodies
Applications:	WB
Recommended Dilution:	WB
Reactivity:	Human
Host:	Rabbit
Isotype:	IgG
Clonality:	Polyclonal
Immunogen:	The immunogen for anti-LRFN5 antibody: synthetic peptide directed towards the middle region of human LRFN5. Synthetic peptide located within the following region: PLITRHTHEMRVLEGQRATLRCKARGDPEPAIHWISPEGKLISNATRSLV
Formulation:	Liquid. Purified antibody supplied in 1x PBS buffer with 0.09% (w/v) sodium azide and 2% sucrose. <i>Note that this product is shipped as lyophilized powder to China customers.</i>
Concentration:	lot specific
Purification:	Protein A purified
Conjugation:	Unconjugated
Storage:	Store at -20°C as received.
Stability:	Stable for 12 months from date of receipt.
Predicted Protein Size:	79 kDa
Gene Name:	leucine rich repeat and fibronectin type III domain containing 5
Database Link:	NP_689660 Entrez Gene 145581 Human Q96NI6
Background:	The specific function of LRFN5 is not yet known.
Synonyms:	C14orf146; FIGLER8; SALM5
Note:	Immunogen Sequence Homology: Dog: 100%; Pig: 100%; Rat: 100%; Horse: 100%; Human: 100%; Mouse: 100%; Bovine: 100%; Rabbit: 100%; Guinea pig: 100%; Zebrafish: 77%



[View online »](#)

Protein Families: Transmembrane

Product images:



WB Suggested Anti-LRFN5 Antibody Titration: 0.2-1 ug/ml; ELISA Titer: 1: 62500; Positive Control: HepG2 cell lysate