

Product datasheet for **TA338853**

FAM161B Rabbit Polyclonal Antibody

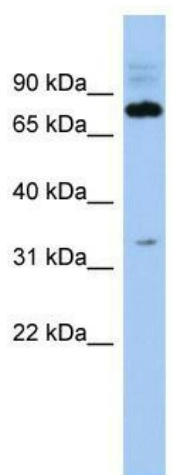
Product data:

Product Type:	Primary Antibodies
Applications:	WB
Recommended Dilution:	WB
Reactivity:	Human
Host:	Rabbit
Isotype:	IgG
Clonality:	Polyclonal
Immunogen:	The immunogen for anti-C14orf44 antibody: synthetic peptide directed towards the middle region of human C14orf44. Synthetic peptide located within the following region: AMDPHKSLSEEVFKAKLKENRNNDKRKRAKEYKKELEEMKQRIQTRPYLFEQ
Formulation:	Liquid. Purified antibody supplied in 1x PBS buffer with 0.09% (w/v) sodium azide and 2% sucrose. <i>Note that this product is shipped as lyophilized powder to China customers.</i>
Concentration:	lot specific
Purification:	Protein A purified
Conjugation:	Unconjugated
Storage:	Store at -20°C as received.
Stability:	Stable for 12 months from date of receipt.
Predicted Protein Size:	74 kDa
Gene Name:	family with sequence similarity 161 member B
Database Link:	NP_689658 Entrez Gene 145483 Human Q96MY7
Background:	The specific function of this protein remains unknown.
Synonyms:	C14orf44; c14_5547
Note:	Immunogen Sequence Homology: Dog: 100%; Pig: 100%; Rat: 100%; Horse: 100%; Human: 100%; Mouse: 100%; Bovine: 100%; Rabbit: 93%



[View online »](#)

Product images:



WB Suggested Anti-FAM161B Antibody Titration:
0.2-1 ug/ml; ELISA Titer: 1: 312500; Positive
Control: THP-1 cell lysate