

Product datasheet for **TA338852**

ZADH1 (PTGR2) Rabbit Polyclonal Antibody

Product data:

Product Type:	Primary Antibodies
Applications:	WB
Recommended Dilution:	WB
Reactivity:	Human
Host:	Rabbit
Isotype:	IgG
Clonality:	Polyclonal
Immunogen:	The immunogen for anti-ZADH1 antibody: synthetic peptide directed towards the middle region of human ZADH1. Synthetic peptide located within the following region: ILDGNSLEKVPQLVDGHLSEYFLGAIGMPGLTSLIGIQEKGHITAGSNKT
Formulation:	Liquid. Purified antibody supplied in 1x PBS buffer with 0.09% (w/v) sodium azide and 2% sucrose. <i>Note that this product is shipped as lyophilized powder to China customers.</i>
Concentration:	lot specific
Purification:	Protein A purified
Conjugation:	Unconjugated
Storage:	Store at -20°C as received.
Stability:	Stable for 12 months from date of receipt.
Predicted Protein Size:	38 kDa
Gene Name:	prostaglandin reductase 2
Database Link:	NP_689657 Entrez Gene 145482 Human Q8N8N7
Background:	PTGR2 is an enzyme involved in the metabolism of prostaglandins. PTGR2 catalyzes the NADPH-dependent conversion of 15-keto-prostaglandin E2 to 15-keto-13,14-dihydro-prostaglandin E2. PTGR2 may also be involved in regulating activation of the peroxisome proliferator-activated receptor.
Synonyms:	HEL-S-298; PGR2; ZADH1

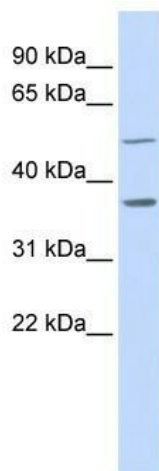


[View online »](#)

Note: Immunogen Sequence Homology: Dog: 100%; Pig: 100%; Rat: 100%; Horse: 100%; Human: 100%; Mouse: 100%; Bovine: 100%; Guinea pig: 93%; Rabbit: 86%

Protein Families: Druggable Genome

Product images:



WB Suggested Anti-PTGR2 Antibody Titration: 0.2-1 ug/ml; ELISA Titer: 1: 312500; Positive Control: MCF7 cell lysate