

Product datasheet for **TA338849**

RAD9 homolog B (RAD9B) Rabbit Polyclonal Antibody

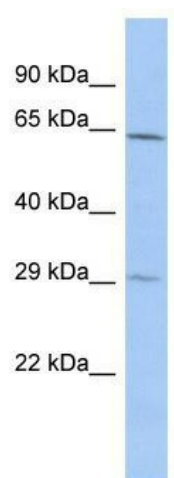
Product data:

Product Type:	Primary Antibodies
Applications:	WB
Recommended Dilution:	WB
Reactivity:	Human
Host:	Rabbit
Isotype:	IgG
Clonality:	Polyclonal
Immunogen:	The immunogen for anti-RAD9B antibody: synthetic peptide directed towards the middle region of human RAD9B. Synthetic peptide located within the following region: SSVSNTTEEVPGLCLRKFCMFFGAVSSDQEHFNHPFDLARASDSEED
Formulation:	Liquid. Purified antibody supplied in 1x PBS buffer with 0.09% (w/v) sodium azide and 2% sucrose. <i>Note that this product is shipped as lyophilized powder to China customers.</i>
Concentration:	lot specific
Purification:	Protein A purified
Conjugation:	Unconjugated
Storage:	Store at -20°C as received.
Stability:	Stable for 12 months from date of receipt.
Predicted Protein Size:	28 kDa
Gene Name:	RAD9 checkpoint clamp component B
Database Link:	NP_689655 Entrez Gene 144715 Human Q6WBX8
Background:	The specific function of this protein remains unknown.
Synonyms:	FLJ40346; MGC75426
Note:	Immunogen Sequence Homology: Pig: 100%; Human: 100%; Dog: 93%; Rat: 79%; Horse: 79%



[View online »](#)

Product images:



WB Suggested Anti-RAD9B Antibody Titration:
0.2-1 ug/ml; ELISA Titer: 1: 1562500; Positive
Control: THP-1 cell lysate