

Product datasheet for **TA338848**

RAD9 homolog B (RAD9B) Rabbit Polyclonal Antibody

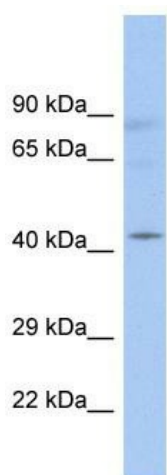
Product data:

| | |
|--------------------------------|--|
| Product Type: | Primary Antibodies |
| Applications: | WB |
| Recommended Dilution: | WB |
| Reactivity: | Human |
| Host: | Rabbit |
| Isotype: | IgG |
| Clonality: | Polyclonal |
| Immunogen: | The immunogen for Anti-RAD9B antibody is: synthetic peptide directed towards the C-terminal region of Human RAD9B. Synthetic peptide located within the following region: ATHAPISYFDFFPGKPLALSIDDMLVEANFILATLADEQSRASSPQSLCL |
| Formulation: | Liquid. Purified antibody supplied in 1x PBS buffer with 0.09% (w/v) sodium azide and 2% sucrose. <i>Note that this product is shipped as lyophilized powder to China customers.</i> |
| Concentration: | lot specific |
| Purification: | Protein A purified |
| Conjugation: | Unconjugated |
| Storage: | Store at -20°C as received. |
| Stability: | Stable for 12 months from date of receipt. |
| Predicted Protein Size: | 45 kDa |
| Gene Name: | RAD9 checkpoint clamp component B |
| Database Link: | NP_001273460 Entrez Gene 144715 Human Q6WBX8 |
| Background: | The function of this protein remains unknown. |
| Synonyms: | FLJ40346; hRAD9B; MGC75426 |
| Note: | Immunogen Sequence Homology: Human: 100%; Dog: 93%; Horse: 93%; Pig: 86%; Rabbit: 79% |



[View online »](#)

Product images:



Host: Rabbit
Target Name: RAD9B
Sample Tissue: Fetal Thymus Lysate
Antibody Dilution: 1.0 μ g/ml

Host: Rabbit; Target Name: RAD9B; Sample
Tissue: Fetal Thymus lysates; Antibody Dilution:
1.0 ug/ml