

Product datasheet for **TA338846**

AMDHD1 Rabbit Polyclonal Antibody

Product data:

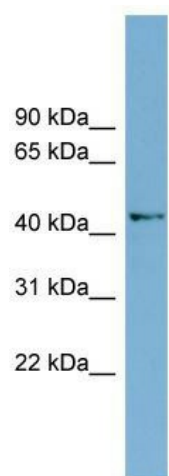
Product Type:	Primary Antibodies
Applications:	WB
Recommended Dilution:	WB
Reactivity:	Human
Host:	Rabbit
Isotype:	IgG
Clonality:	Polyclonal
Immunogen:	The immunogen for anti-AMDHD1 antibody: synthetic peptide directed towards the N terminal of human AMDHD1. Synthetic peptide located within the following region: AVLEGASLVVGKDGFIKAIGPADVIQRQFSGETFEEIIDCSGKCILPGLV
Formulation:	Liquid. Purified antibody supplied in 1x PBS buffer with 0.09% (w/v) sodium azide and 2% sucrose. <i>Note that this product is shipped as lyophilized powder to China customers.</i>
Concentration:	lot specific
Purification:	Protein A purified
Conjugation:	Unconjugated
Storage:	Store at -20°C as received.
Stability:	Stable for 12 months from date of receipt.
Predicted Protein Size:	47 kDa
Gene Name:	amidohydrolase domain containing 1
Database Link:	NP_689648 Entrez Gene 144193 Human Q96NU7
Background:	The function of this protein remains unknown.
Synonyms:	HMFT1272
Note:	Immunogen Sequence Homology: Human: 100%; Mouse: 92%; Pig: 86%; Rat: 86%; Guinea pig: 86%; Horse: 79%; Bovine: 79%; Rabbit: 79%



[View online »](#)

Protein Pathways: Histidine metabolism, Metabolic pathways

Product images:



WB Suggested Anti-AMDHD1 Antibody Titration:
0.2-1 ug/ml; Positive Control: Jurkat cell lysate