

Product datasheet for **TA338845**

PIWIL4 Rabbit Polyclonal Antibody

Product data:

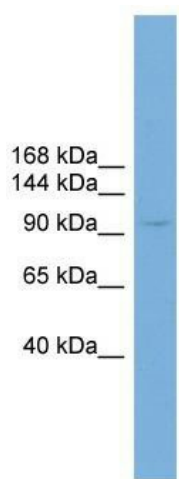
Product Type:	Primary Antibodies
Applications:	WB
Recommended Dilution:	WB
Reactivity:	Human
Host:	Rabbit
Isotype:	IgG
Clonality:	Polyclonal
Immunogen:	The immunogen for anti-PIWIL4 antibody: synthetic peptide directed towards the N terminal of human PIWIL4. Synthetic peptide located within the following region: LSNNEASSSNGFLGTSRISTNDKYGISSGDAGSTFMERGVKNKQDFMDLS
Formulation:	Liquid. Purified antibody supplied in 1x PBS buffer with 0.09% (w/v) sodium azide and 2% sucrose. <i>Note that this product is shipped as lyophilized powder to China customers.</i>
Concentration:	lot specific
Purification:	Protein A purified
Conjugation:	Unconjugated
Storage:	Store at -20°C as received.
Stability:	Stable for 12 months from date of receipt.
Predicted Protein Size:	96
Gene Name:	piwi like RNA-mediated gene silencing 4
Database Link:	NP_689644 Entrez Gene 143689 Human Q7Z3Z4
Background:	PIWIL4 belongs to the Argonaute family of proteins, which function in development and maintenance of germline stem cells.
Synonyms:	HIWI2; MIWI2
Note:	Immunogen Sequence Homology: Human: 100%



[View online »](#)

Protein Pathways: Dorso-ventral axis formation

Product images:



WB Suggested Anti-PIWIL4 Antibody Titration:
0.2-1 ug/ml; Positive Control: HT1080 cell lysate