

Product datasheet for **TA338844**

PIWIL4 Rabbit Polyclonal Antibody

Product data:

Product Type:	Primary Antibodies
Applications:	WB
Recommended Dilution:	WB
Reactivity:	Human
Host:	Rabbit
Isotype:	IgG
Clonality:	Polyclonal
Immunogen:	The immunogen for anti-PIWIL4 antibody: synthetic peptide directed towards the N terminal of human PIWIL4. Synthetic peptide located within the following region: SGRARVKARGIARSPSATEVGRIQASPLPRSVDLNNEASSSNGFLGTSR
Formulation:	Liquid. Purified antibody supplied in 1x PBS buffer with 0.09% (w/v) sodium azide and 2% sucrose. <i>Note that this product is shipped as lyophilized powder to China customers.</i>
Concentration:	lot specific
Purification:	Protein A purified
Conjugation:	Unconjugated
Storage:	Store at -20°C as received.
Stability:	Stable for 12 months from date of receipt.
Predicted Protein Size:	96 kDa
Gene Name:	piwi like RNA-mediated gene silencing 4
Database Link:	NP_689644 Entrez Gene 143689 Human Q7Z3Z4
Background:	PIWIL4 belongs to the Argonaute family of proteins, which function in development and maintenance of germline stem cells. PIWIL4 belongs to the Argonaute family of proteins, which function in development and maintenance of germline stem cells (Sasaki et al., 2003 [PubMed 12906857]). [supplied by OMIM]
Synonyms:	HIWI2; MIWI2

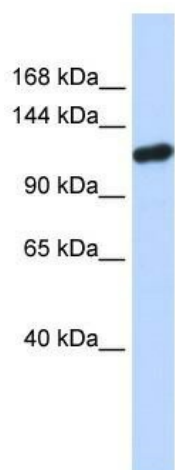


[View online »](#)

Note: Immunogen Sequence Homology: Human: 100%

Protein Pathways: Dorso-ventral axis formation

Product images:



WB Suggested Anti-PIWIL4 Antibody Titration:
0.2-1 ug/ml; ELISA Titer: 1: 1562500; Positive
Control: Human brain