

## Product datasheet for **TA338843**

### VPS37A Rabbit Polyclonal Antibody

#### Product data:

|                         |   |
|-------------------------|---|
| Product Type:           | Primary Antibodies  |
| Applications:           | WB  |
| Recommended Dilution:   | WB  |
| Reactivity:             | Human   |
| Host:                   | Rabbit  |
| Isotype:                | IgG   |
| Clonality:              | Polyclonal  |
| Immunogen:              | The immunogen for anti-VPS37A antibody: synthetic peptide directed towards the N terminal of human VPS37A. Synthetic peptide located within the following region:<br>SWLFPLTKSASSSAAGSPGGLTSLQQQKQRLIESLRNSHSSIAEIQKDVE                       |
| Formulation:            | Liquid. Purified antibody supplied in 1x PBS buffer with 0.09% (w/v) sodium azide and 2% sucrose.<br><i>Note that this product is shipped as lyophilized powder to China customers.</i>   |
| Concentration:          | lot specific  |
| Purification:           | Protein A purified  |
| Conjugation:            | Unconjugated  |
| Storage:                | Store at -20°C as received.   |
| Stability:              | Stable for 12 months from date of receipt.  |
| Predicted Protein Size: | 44 kDa  |
| Gene Name:              | VPS37A, ESCRT-I subunit   |
| Database Link:          | <a href="#">NP_689628</a><br><a href="#">Entrez Gene 137492 Human Q8NEZ2</a>  |
| Background:             | VPS37A is a component of the ESCRT-I complex, a regulator of vesicular trafficking process. Required for the sorting of endocytic ubiquitinated cargos into multivesicular bodies. VPS37A may be involved in cell growth and differentiation. |
| Synonyms:               | HCRP1; PQBP2; SPG53   |

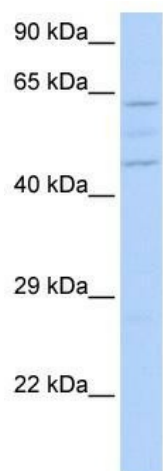


[View online »](#)

**Note:** Immunogen Sequence Homology: Dog: 100%; Pig: 100%; Rat: 100%; Horse: 100%; Human: 100%; Mouse: 100%; Bovine: 100%; Rabbit: 100%; Guinea pig: 100%; Zebrafish: 85%; Yeast: 82%

**Protein Pathways:** Endocytosis

**Product images:**



WB Suggested Anti-VPS37A Antibody Titration:  
0.2-1 ug/ml; ELISA Titer: 1: 1562500; Positive  
Control: MCF7 cell lysate