

Product datasheet for **TA338839**

TRAM1L1 Rabbit Polyclonal Antibody

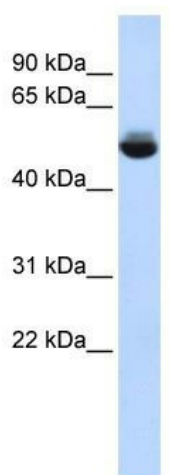
Product data:

Product Type:	Primary Antibodies
Applications:	WB
Recommended Dilution:	WB
Reactivity:	Human
Host:	Rabbit
Isotype:	IgG
Clonality:	Polyclonal
Immunogen:	The immunogen for anti-TRAM1L1 antibody: synthetic peptide directed towards the middle region of human TRAM1L1. Synthetic peptide located within the following region: LWAIWFILGRLVTLIVSVLTVGFHLAGSQNRNPDALTGNNVLAAKIAVL
Formulation:	Liquid. Purified antibody supplied in 1x PBS buffer with 0.09% (w/v) sodium azide and 2% sucrose.
Concentration:	lot specific
Purification:	Protein A purified
Conjugation:	Unconjugated
Storage:	Store at -20°C as received.
Stability:	Stable for 12 months from date of receipt.
Predicted Protein Size:	42 kDa
Gene Name:	translocation associated membrane protein 1-like 1
Database Link:	NP_689615 Entrez Gene 133022 Human Q8N609
Background:	TRAM1L1 is stimulatory or required for the translocation of secretory proteins across the ER membrane.
Synonyms:	MGC26568
Note:	Immunogen Sequence Homology: Human: 100%; Rabbit: 86%; Dog: 79%
Protein Families:	Transmembrane



[View online »](#)

Product images:



WB Suggested Anti-TRAM1L1 Antibody Titration:
0.2-1 ug/ml; ELISA Titer: 1: 312500; Positive
Control: Human Liver